



**FANMASTER**  
COOLING HEATING VENTILATION EXTRACTION



# TECHNICAL CATALOGUE

I S S U E 1 8

[www.fanmaster.com.au](http://www.fanmaster.com.au)

## Introduction.

---

# ABOUT US

Fanmaster is a manufacturer & importer of high quality industrial fans, evaporative coolers, portable air conditioners, heaters, ventilation & extraction equipment. The Fanmaster range is synonymous with quality, affordability and reliability. We are a wholly owned and Australian business, who through our reseller network, provide solutions throughout the Asia-Pacific region.

Originally founded in 1946, Fanmaster was restructured and came into existence as it is now known today and in 2009, became a propriety limited company. Fanmaster is one of Australia's longest running cooling, heating and ventilation companies in Australia.

We at Fanmaster, provide quality service to the industrial and commercial markets by providing first class customer service, backed up with superior technical knowledge. Fanmaster strives to help its customers build and develop their chosen markets through supply partnerships and a commitment to providing outstanding support. We only sell products of the highest quality. The entire Fanmaster range has been tried and tested under extreme pressures in a variety of environments.

We are the heating, cooling and ventilation experts and our sales support is second to none, so you can rest assured you are buying a reliable product of the highest quality that is comprehensively supported and built to last. We have our established brands such as Fanmaster, National Fans (NF) & Masterfans. We have also partnered with high quality international brands such as OUBER, ICEN & VAL6.

## Our Brands.

---



## Partner Brands.

---

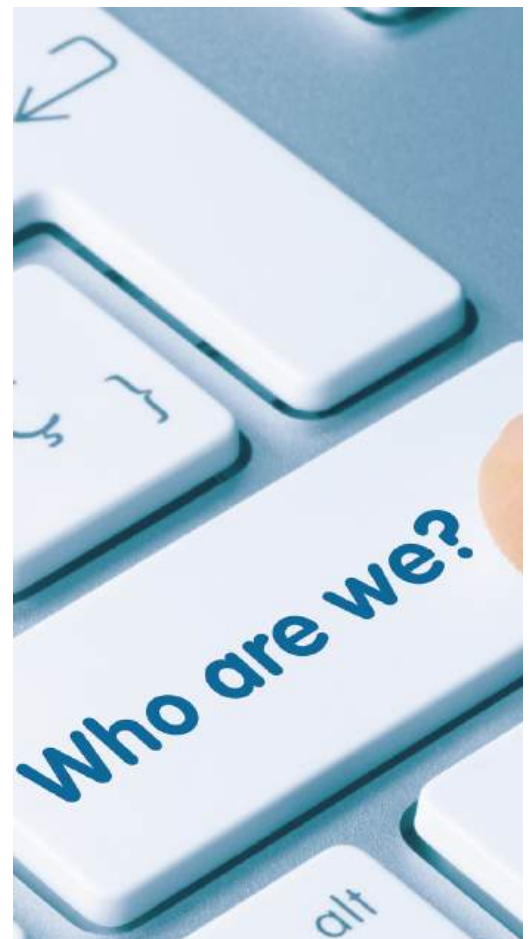


## Australian Made.

---



Fanmaster manufactures a range of high quality and heavy duty industrial fans & electric heaters in our manufacturing plant based in Kirrawee, New South Wales.



**FANMASTER**  
*More than fans*



A collection of handy resources designed to assist with product selection, system planning, and performance calculations, all easily accessible via QR codes.



## Air Flow Conversion Calculator

The Air Flow Conversion Calculator provides quick and accurate conversions between CFM, L/s, and m<sup>3</sup>/h air flow measurements. It is an essential tool for HVAC professionals and engineers when selecting, comparing, or specifying ventilation and air movement equipment.



## Air Changes Calculator

The Air Changes Calculator helps determine the number of air changes per hour (ACH) required for a given space based on room volume and air flow rate. It is a valuable tool for HVAC professionals to ensure proper ventilation design, air quality and system efficiency.



## Products By Application

The Products by Application section allows users to easily find Fanmaster equipment suited to their specific needs and environments. It categorises products based on application type, helping customers quickly identify the most effective solutions for cooling, heating, or ventilation in their workspace.



## Video Library

The Video Library provides a collection of informative and instructional videos showcasing Fanmaster's product range, features and applications. It serves as a valuable resource for customers and technicians to learn about product operation, installation and maintenance.





Scan Me

# Fanmaster TV

At Fanmaster, we believe buying heating, cooling and ventilation equipment shouldn't be complicated. That's why we created Fanmaster TV—our dedicated YouTube channel packed with practical videos designed to make your life easier. Whether you're a business owner, installer, or just someone looking for the right solution, Fanmaster TV gives you clarity before you buy, saves you time, provides direct access to expert advice and helps you get the most out of your equipment.

Scan the QR code or head to [YouTube.com/@FanmasterAustralia](https://www.youtube.com/@FanmasterAustralia) and subscribe today.



YOUR GO-TO HUB FOR PRODUCT DEMOS, HOW-TO GUIDES & EXPERT INSIGHTS.

WATCH. LEARN. GET THE JOB DONE.

Subscribe

All Videos

Cooling

Extraction

Heating

Ventilation



Why Heating and Ventilation Go Hand in Hand



Portable vs Fixed Fume Extractors – Which is Best for Your Workshop?



Welding Fume Classifications in Australia | Safe Work Compliance & Ventilation Tips

# Reseller PORTAL

Our reseller portal on our website has been designed specifically for you, our resellers and installers. The portal gives you quick and easy access to your trade or wholesale pricing, current promotions and detailed product information, all in one place. You can place orders, check your order status, check stock and download resources like videos, brochures and marketing material to help you sell or quote faster. Whether in the office or out on site, the portal is built to make your life easy and save you time.

Scan the QR code or head to <https://reseller.fanmaster.com.au/>

Benefits of the Fanmaster Reseller Portal:

Instant Trade & Wholesale Pricing – View your pricing anytime, no need to call or wait.




Scan Me



 Dashboard


 P & A

 Orders

 Calendar

 Resources

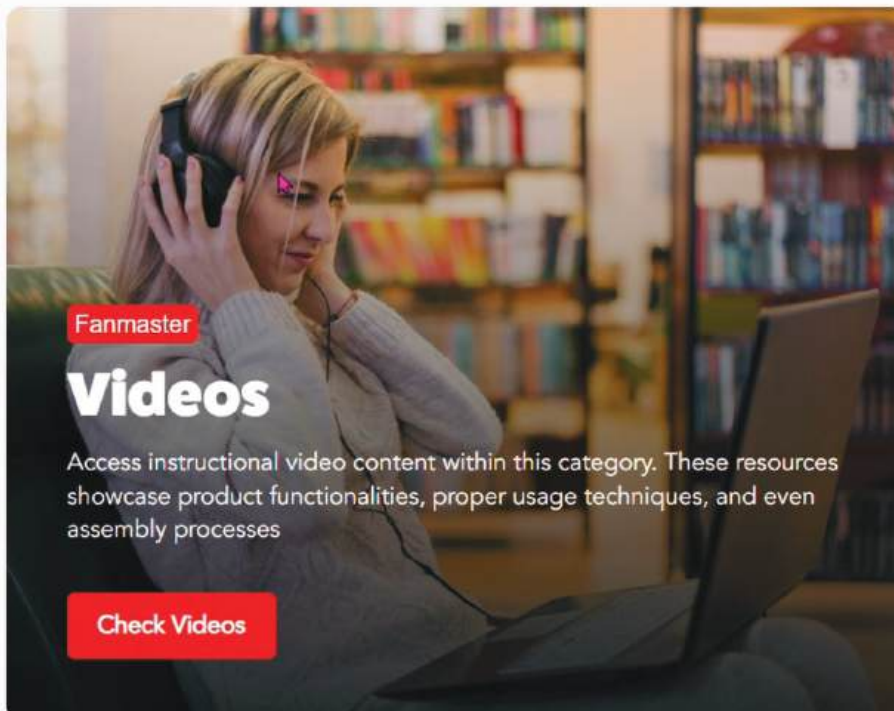
 Contact

 My Profile

 Logout

## Marketing & Training Hub

Welcome to the Fanmaster Marketing & Training Hub. This is your gateway to information, marketing material and how-to guides designed to grow your product knowledge and enable you to advise your customer on



**Fanmaster**

### Videos

Access instructional video content within this category. These resources showcase product functionalities, proper usage techniques, and even assembly processes

[Check Videos](#)



**Fanmaster**

### Docum

Within this category, you can find brochures, flyers, and product specifications for

[Check Docum](#)



Cooling



Heating



Ventilation/Extraction



Drying



Spare Parts

**FANMASTER**  
*More than fans*

# TABLE OF CONTENTS

05	Evaporative Coolers
10	Portable Air Conditioners
13	Misting Fan
13	Mancoolers
15	Fans - Pedestal, Wall & Floor
27	Diesel Radiant Heaters
28	Electric Radiant Heaters
30	Gas Radiant Heaters
31	Diesel Space Heaters
32	Electric Space Heaters
33	LPG Space Heaters
39	Wall Exhaust Extraction Fans
42	Axial Flow Fans



43	Inline Duct Fans
45	Roof Fans
47	Portable Ventilators - Purging Fans, Exhaust Blowers
50	Air Scrubber Purifiers
52	Portable Fume Collectors/Extractors
55	Industrial Dehumidifiers
55	Carpet Dryer
59	Ducting/Joining Rings
60	Heat Shielding Mat
60	Fume Collector Filters
61	Spare Parts List
63	Terms & Conditions



What is Evaporative Cooling?	9
Temperature Drop Chart	10
What is a Portable Air Conditioner?	12
What is Air Circulation?	18
How to Choose your Cooler	21
How to Choose your Fan	22





# COOLING PRODUCTS


**05**

## PORTABLE EVAPORATIVE COOLERS

Portable Evaporative Coolers.  
Area coverage from 30m<sup>2</sup> to 150m<sup>2</sup>


**08**

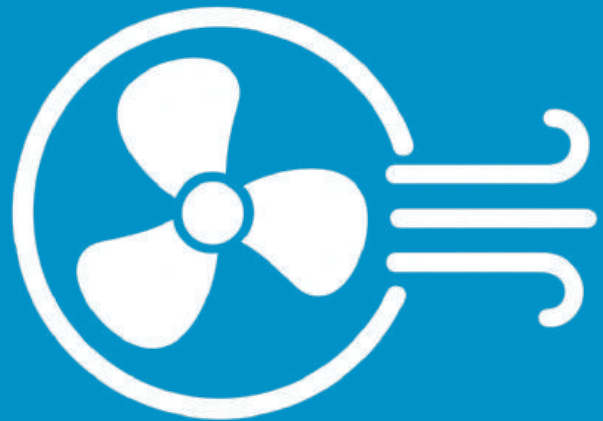
## FIXED EVAPORATIVE COOLERS

Fixed Evaporative Coolers.  
Area coverage up to 150m<sup>2</sup>


**11**

## PORTABLE AIR CONDITIONERS

Portable Air Conditioners. Sizes from 2KW to 9.4KW. Reverse cycle unit available. Area coverage from 15m<sup>2</sup> to 100m<sup>2</sup>


**13**

## MISTING FANS

Heavy duty portable misting fan


**13**

## MOBILE MANCOOLERS

Mini & Mobile Mancoolers. Sizes from 300mm to 1000mm. Single or three phase


**15**

## PEDESTAL, WALL & FLOOR FANS

Heavy duty pedestal, wall & floor fans. Sizes from 300mm to 850mm

# PRODUCTS BY APPLICATION



PRODUCTS BY APPLICATION	PAC125-ADC	PAC280-A	PAC1100-A	PACIMD/PACISD	IDDAC-670	IAC	IPAC2
-------------------------	------------	----------	-----------	---------------	-----------	-----	-------

## CONSTRUCTION

COOLING SITES		■	■	■		■	■
COOLING PEOPLE	■	■	■	■		■	■
AIR CIRCULATION							
DUST SUPPRESSION							

## WAREHOUSE, FACTORIES, WORKSHOPS & GARAGES

SPACE COOLING	■	■	■	■	■		■
SPOT COOLING	■	■	■	■		■	■
AIR CIRCULATION							
COOLING PEOPLE							

## RESTAURANTS, RETAIL & OFFICES

SPACE COOLING	■	■	■		■		■
SPOT COOLING	■	■	■			■	■
AIR CIRCULATION							
COOLING PEOPLE							

## AGRICULTURE

COOLING LIVE STOCK		■	■	■	■		
COOLING GREENHOUSES		■	■	■	■		

## MARQUEE/TENTS/EVENTS/MILITARY

OUTDOOR COOLING	■	■	■	■			
TENT COOLING	■	■	■	■		■	■

## RENTAL & EMERGENCY BREAKDOWNS

SPACE COOLING	■	■	■	■			■
SPOT COOLING	■	■	■	■		■	■
AIR CIRCULATION							
COOLING PEOPLE	■	■	■	■		■	■

# PRODUCTS BY APPLICATION



PRODUCTS BY APPLICATION	IMF600	MC	IFP/NFPD	IFW/NFWL	IFF/NFFL/DF	VELOCITY	PROBLO	HVLS
-------------------------	--------	----	----------	----------	-------------	----------	--------	------

## CONSTRUCTION

COOLING SITES	■		■		■	■		
COOLING PEOPLE	■	■	■		■	■	■	
AIR CIRCULATION	■	■	■		■	■	■	
DUST SUPPRESSION	■						■	

## WAREHOUSE, FACTORIES, WORKSHOPS & GARAGES

SPACE COOLING								
SPOT COOLING	■							
AIR CIRCULATION	■	■	■	■	■	■		■
COOLING PEOPLE	■	■	■	■	■	■		■

## RESTAURANTS, RETAIL & OFFICES

SPACE COOLING								■
SPOT COOLING								
AIR CIRCULATION			■	■	■	■		■
COOLING PEOPLE			■	■	■	■		■

## AGRICULTURE

COOLING LIVE STOCK	■	■	■	■				■
COOLING GREENHOUSES	■	■	■	■				■

## MARQUEE/TENTS/EVENTS/MILITARY

OUTDOOR COOLING	■	■	■		■	■		
TENT COOLING					■	■		

## RENTAL & EMERGENCY BREAKDOWNS

SPACE COOLING								
SPOT COOLING								
AIR CIRCULATION	■	■	■		■	■		
COOLING PEOPLE	■	■	■		■	■		



## EVAPORATIVE COOLING

Fanmaster's range of Portable Evaporative Air Coolers by OUBER offer efficient and reliable cooling solutions for a variety of commercial, industrial and domestic applications. Utilising the natural process of water evaporation, these units deliver high airflow performance while maintaining low energy consumption. Designed for durability and portability, each model features robust housing, adjustable fan speeds, large water tank capacity and easy mobility for flexible use across different environments. Ideal for workshops, warehouses, offices and outdoor areas, Fanmaster's evaporative air coolers provide a cost-effective and environmentally friendly alternative to traditional air conditioning systems.

### Key Features

- ✓ Energy-efficient evaporative cooling system with low operating costs
- ✓ High airflow performance for effective cooling in large or open spaces
- ✓ Durable, corrosion-resistant construction for long-term reliability
- ✓ Large water tank capacity for extended continuous operation
- ✓ Adjustable fan speeds and directional louvres for controlled air distribution
- ✓ Portable design with heavy-duty castor wheels for easy movement between locations



## Portable Evaporative

PAC125-ADC

**OUBER**

**2 YEAR  
WARRANTY**

### Features:

- Energy-efficient DC motor with low power use
- 3-sided air inlet for maximum airflow
- Touch LED control panel with full-function remote
- 9 adjustable speeds with fan-only mode
- Automatic swing and adjustable louvres
- Water level indicator for easy monitoring
- Removable panel for simple cleaning
- Portable design with durable wheels

### Applications:

- Warehouse, workshops & factories
- Agriculture
- Construction sites
- Events & military
- Rental & emergency



SPECIFICATIONS	UNIT	PAC125-ADC
Air Flow	L/S	1,111
Fan Type		Axial
Noise Level	dBa	<61
Motor	kW	0.125
Voltage/Frequency		220~240/50
Current	A	0.78
Plug Connection		3 Pin 10A
Cooling Area	m <sup>2</sup>	up to 30
Air Supply Distance	m	8
Tank Capacity	L	40
Water Consumption	L/H	3-8
Fan Speed		9
Cooling Pad Size	mm	580*225
Cooling Pad Thickness	mm	40
Material of Blades		
Material of Body		PP body + tank
Weight	kg	16.5 / 19
Product Dimensions (L*D*H)	mm	580*375*1050
Pack Dimensions	mm	590*390*1000

## Portable Evaporative

PAC280-A

**OUBER**

**2 YEAR  
WARRANTY**



### Features:

- Efficient and durable spot cooler
- Digital LCD control panel with remote control for easy use
- Air supply distance up to 11m
- Automatic swing louvre function
- Large water tank for longer operation
- Low power consumption
- 3 large cooling pads with pre-filters for dust
- Heavy duty wheels with brake function
- Connect to standard garden hose

### Applications:

- Warehouse, workshops & factories
- Agriculture
- Construction sites
- Events & military
- Rental & emergency



WATCH ME

SPECIFICATIONS	UNIT	PAC280-A
Air Flow	L/S	2,111
Fan Type		Axial
Noise Level	dBa	<63
Motor	kW	0.28
Voltage/Frequency		220~240/50
Current	A	1.3
Plug Connection		3 Pin 10A
Cooling Area	m <sup>2</sup>	up to 50
Air Supply Distance	m	11
Tank Capacity	L	120
Water Consumption	L/H	10
Fan Speed		3
Cooling Pad Size - side/back	mm	698*230 / 700*770
Cooling Pad Thickness - side/back	mm	55 / 75
Material of Blades		Nylon
Material of Body		PP body + tank
Weight	kg	38 / 43
Product Dimensions (L*D*H)	mm	910*490*1380
Pack Dimensions	mm	920*490*1280

## Portable Evaporative

PAC1100-A

**OUBER**

**2 YEAR  
WARRANTY**



### Features:

- 50 adjustable speeds with digital touch panel and remote
- 175L water tank with quick connect and pump
- Silent fan with pure copper motor
- Odour-free pad with 92%+ evaporation rate
- Water-drop wind bar for smooth airflow
- Dust-proof filter for clean air
- Swivel casters with brakes and cable storage
- 1-8 hr timer with wide adjustment range

### Applications:

- Warehouse, workshops & factories
- Agriculture
- Construction sites
- Events & military
- Rental & emergency

SPECIFICATIONS	PAC1100-A
Power (kW)	1.1
Voltage/Frequency (V/Hz)	220-420/50
Current (A)	7.5
Airflow (L/s)	5000
Fan Type	Axial/50 Speeds
Fan Blade Material	3 Nylon Fan Blades
Air Supply Distance (m)	24
Water Tank Capacity (L)	175
Water Consumption (L/h)	20~40
Noise (dB)	68
Material of Body	Polypropylene
Control Model	Digital Touch Pad/ Remote Control
Air Outlet Direction	Side
Outlet Size (mm)	685x645
Dimensions (mm)	1060x650x1670
Packaging Dimensions (mm)	1075x670x1580
Net Weight/Gross Weight (kg)	58/68
IP Rating	IPX0

# Cooling

## Portable Evaporative

PACISD - SINGLE DIRECTONAL

**OUBER**

**2 YEAR  
WARRANTY**



AVAILABLE IN DIY KITS - PACISD-PA

### Features:

- Single direction air outlet
- Automatic swing louvres
- Low power consumption
- Variable speed
- 4 air inlet sections
- Remote control
- Can be connected to a regular garden hose for continuous water supply
- Float valve sensor

### Applications:

- Warehouse, workshops & factories
- Agriculture
- Construction sites
- Events & military
- Rental & emergency



SPECIFICATIONS	UNIT	PACISD
Air Flow	L/S	5,000
Fan Type		Axial
Noise Level	dBa	<68
Motor	kW	1.1
Voltage/Frequency		220~240/50
Current	A	7.5
Plug Connection		3 Pin 10A
Cooling Area	m <sup>2</sup>	up to 150
Air Supply Distance	m	28
Tank Capacity	L	300
Water Consumption	L/H	15
Fan Speed		Variable
Cooling Pad Size	mm	700*770
Cooling Pad Thickness	mm	100
Material of Blades		ABS
Material of Body		PP body + Galvanised Steel Tank
Weight	kg	98/120
Product Dimensions (L*D*H)	mm	1080*1080*1940
Pack Dimensions	mm	1080*1080*2150

## Portable Evaporative

PACIMD - MULTI DIRECTONAL

**OUBER**

**2 YEAR  
WARRANTY**



AVAILABLE IN DIY KITS - PACIMD-PA

### Features:

- Efficient and durable spot cooler
- Digital LCD control panel with remote control for easy use
- 8 x air outlets
- Adjustable swing louvres
- Large water tank for longer operation
- Low power consumption
- 4 large cooling pads with pre filters for dust
- Heavy duty wheels with brake function
- Connect to standard garden hose connection for continuous water supply

### Applications:

- Warehouse, workshops & factories
- Agriculture
- Construction sites
- Events & military
- Rental & emergency



SPECIFICATIONS	UNIT	PACIMD
Air Flow	L/S	5,000
Fan Type		Axial
Noise Level	dBa	<68
Motor	kW	1.1
Voltage/Frequency		220~240/50
Current	A	7.5
Plug Connection		3 Pin 10A
Cooling Area	m <sup>2</sup>	up to 150
Air Supply Distance	m	4 per air outlet (8)
Tank Capacity	L	300
Water Consumption	L/H	15
Fan Speed		Variable
Cooling Pad Size	mm	700*770
Cooling Pad Thickness	mm	100
Material of Blades		ABS
Material of Body		PP body + Galvanised Steel Tank
Weight	kg	89/110
Product Dimensions (L*D*H)	mm	1080*1080*1640
Pack Dimensions	mm	1080*1080*1800



## Fixed Evaporative

IDDAC-670

**OUBER**

**2 YEAR  
WARRANTY**

The Ouber IDDAC-670 is an industrial evaporative air conditioner that uses a low-wattage pump and four wet cooling pads to cool air through natural evaporation. Designed for external mounting, it features four-sided air intake and a downdraft outlet for efficient ducted airflow into large spaces.

### Features:

- High air flow with low noise
- Down draft air outlet
- 4 x air inlets with filters
- LCD control panel with remote control
- Low power consumption - 1.1kW, 240v
- Plumbed in for continuous water supply
- Roof or wall mounted options
- Fresh cool air constantly supplied
- Fan only option

### Applications:

- Warehouse, workshops & factories
- Agriculture
- New & existing commercial & industrial builds
- Events & military



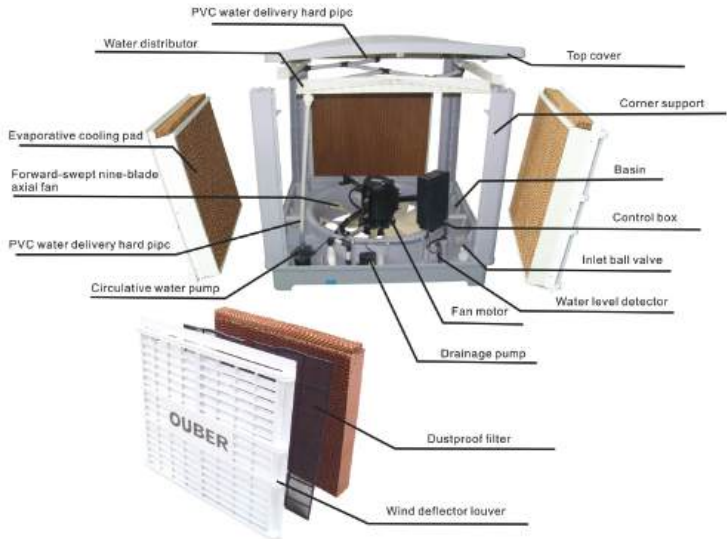
WATCH ME  
FEATURES &  
APPLICATIONS

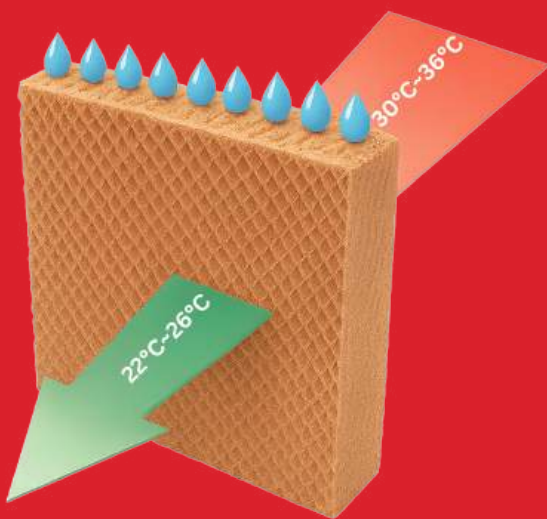


WATCH ME  
HOW IT  
WORKS



SPECIFICATIONS	UNIT	IDDAC-670
Air Flow	L/S	5,000
Fan Type		Axial
Noise Level	dBa	<68
Motor	kW	1.1
Voltage/Frequency		220-240/50
Current	A	7.5
Plug Connection		Hard Wired
Cooling Area	m <sup>2</sup>	up to 150
Air Supply Distance	m	22
Tank Capacity	L	25
Water Consumption	L/H	20
Fan Speed		Variable
Cooling Pad Size	mm	700*770
Cooling Pad Thickness	mm	100
Material of Blades		ABS
Material of Body		PP body
Weight	kg	56/69
Product Dimensions (L*D*H)	mm	1080*1080*980
Pack Dimensions	mm	1080*1080*1000





## What is Evaporative Cooling?

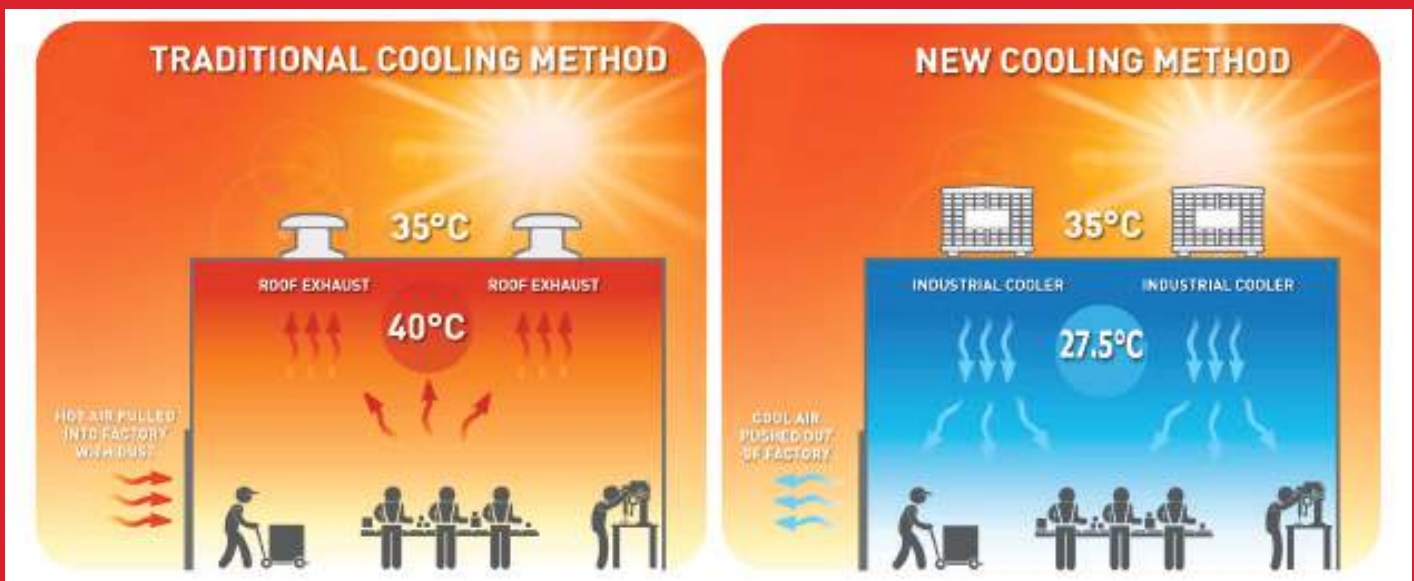
Evaporative cooling is a form of air conditioning and an alternate to traditional refrigerant based air conditioning systems. Evaporative cooling utilises the natural process of evaporation to cool the air.

## How Does it Work?

Evaporative coolers use a low-wattage water pump to circulate water from the tank, distributing it across multiple cooling pads that become saturated. The fan then draws warm ambient air through the damp cooling pads, and as the air passes through, it is cooled by evaporation.

## Advantages

- Less expensive to install
- Less expensive to operate (vs. refrigerated air conditioning systems)
- Ease of maintenance
- Constant fresh air is supplied



## Temperature Drop Chart

		Outdoor Humidity								
	Outlet Temperature	10%	20%	30%	40%	50%	60%	70%	80%	90%
Outdoor Temperature	25°C	12.0	13.0	14.5	15.7	17.5	19.1	21.5	22.3	23.7
	27°C	13.5	14.5	16.5	17.4	20.0	21.2	23.0	24.6	27.0
	30°C	15.5	16.5	19.0	20.4	22.5	23.9	26.0	27.6	30.0
	32°C	17.0	18.0	21.0	22.6	25.0	26.6	29.0	30.4	32.0
	35°C	19.0	20.0	23.0	24.8	27.5	29.1	31.5	33.1	
	37°C	20.5	22.7	25.0	26.8	29.5	31.1	33.5		
	40°C	22.0	23.8	26.5	28.3	31.0	33.0			
	42°C	23.0	25.0	28.0	29.8	32.5				
	45°C	24.0	25.9	28.9	30.8					

## Portable Air Conditioners

IAC-27, IAC-45, IAC-65



**1 YEAR**  
WARRANTY

### Features:

- Spot cooling in a variety of commercial & industrial applications
- Heavy duty self-contained housing
- Easy to use on/off switch
- Adjustable cooling arms
- Easy to remove condenser tank
- Exhaust duct standard to direct hot air away
- Cleanse and dehumidifies the air
- Compact and easy to move
- Heavy duty wheels with brake function

### Applications:

- Warehouses, workshops & factories
- Commercial kitchens
- Hospitals & laboratories
- Emergency cooling & server rooms
- Multi workstations
- Marquee events
- Temporary office cooling
- Equipment spot cooling



SPECIFICATIONS	UNIT	IAC-27	IAC-45	IAC-65
Max Air Flow	L/S	111	222	333
Cooling Capacity	Kw / BTU	2.7 / 9,200	4.5 / 15,300	6.5 / 22,000
Noise Level	dBa	55	60	65
Rated Power	kW	0.95	2	3.3
Voltage/Frequency		220~240V/50Hz	220~240V/50Hz	220~240V/50Hz
Current	A	4.2	9.0	13.5
Plug Connection		3 Pin 10A	3 Pin 15A	3 Pin 15A
Refrigerant		R410A	R410A	R410A
Refrigerant Charge		460 grams (+/-10g)	800 grams (+/-10g)	1050 grams (+/-10g)
No. of Cool Air Duct		1	3	3
Cooling Duct Diameter	mm	120	120	120
Exhaust Duct Diameter	mm	160	200	250
Fan Speed		2	2	2
Condensation Tank	L	55	60	65
Weight	kg N/G	5	8	13
Product Dimensions	mm	42 / 47	70 / 75	94 / 150
Pack Dimensions	mm	(W)405x(D)430x(H)855	(W)520x(D)480x(H)1035	(W)630x(D)560x(H)1245



## Portable Air Conditioners

IPAC2-47, IPAC2-61, IPAC2-94



### Features:

- Premium cooling solution
- Spot & Room mode cooling (dedicated thermostat controls)
- Room mode cools up to 100m<sup>2</sup>
- Heavy duty self-contained housing
- Easy to use LCD control panel
- Adjustable cooling arms
- Easy to remove condenser tank
- Cleanse and dehumidifies the air
- Self-diagnostic system
- Heavy duty wheels with brake function

### Applications:

- Warehouses, workshops & factories
- Commercial kitchens
- Hospitals & laboratories
- Emergency cooling & server rooms
- Multi workstations
- Marquee events
- Temporary office cooling
- Equipment spot cooling
- Military use - tents, aircraft hangars



WATCH ME  
IPAC-47



WATCH ME  
IPAC-61



WATCH ME  
IPAC-94



SPECIFICATIONS	UNIT	IPAC-47	IPAC-61	IPAC-94
Air Flow	L/S	189/222	219/264	366/416
Cooling Capacity	Kw / BTU	4.7 / 16,000	6.1 / 21,000	9.4 / 32,000
Power Consumption	kW	1.7	2.1	3.3
Voltage/Frequency		220~240V/50Hz	220~240V/50Hz	220~240V/50Hz
Current	A	7.5	9.5	16.5
Plug Connection		3 Pin 10A	3 Pin 15A	*Fixed Wiring
Refrigerant		R410A	R410A	R410A
Refrigerant Charge		950 grams (+/-10g)	1050 grams (+/-10g)	1500 grams (+/-10g)
EER (Energy Efficient Ratio) BTU/Wh		9.8	-	10.6
Cooling Area (Room Mode)	m <sup>2</sup>	40	50	100
No. of Cool Air Duct		2	2	3
Fan Speed		2	2	2
Weight	kg	86	88	110
Dimensions	mm	(W)523x(D)671x(H)1042	(W)523x(D)671x(H)1042	
Cable Length	m	3	3	3
Country of Manufacture	m	South Korea	South Korea	South Korea

\* Fixed wiring - a qualified electrician is required to do any fixed wiring work for this appliance

## Portable Air Conditioners

IPAC2-MINI



### Features:

- Compact Design: Perfect for small spaces
- Efficient Cooling: Delivers 2kW of cooling power
- Flexible Airflow: 360-degree rotatable nozzle for targeted cooling
- Easy to Use: Simple controls and portable design

### Applications:

- Offices
- Home offices
- Small server rooms
- Garages & workshops



SPECIFICATION	IPAC2-MINI
Cooling Capacity KW BTU	2 6,745
Air Flow (L/s)	
Power Consumption (W)	720
Voltage	230V/50Hz
Current (A)	6.38
Plug Connection	3 Pin 10A
Refrigerant	R32
Refrigerant Charge	
EER (Energy Efficient Ratio) BTU/Wh	
Cooling Area (m <sup>2</sup> ) (room mode)	15
No. of Cool Air Duct	1
Condensation Tank (L)	3
Fan Speed	
Weight	24
Dimensions (mm) h x w x d	568x483x269
Country of Manufacture	South Korea
Cable Length	

## Portable Air Conditioners IPHC2-35 Reverse Cycle



### Features:

- Perfect all year round solution
- Cooling, Heating & Auto Modes
- 4kW Cooling capacity
- 4.3kW Heating capacity
- Self-diagnostic function
- 6 Speeds
- 143 L/s Airflow
- 32m<sup>2</sup> cooling area
- Heavy duty self-contained housing
- Easy to use LCD control panel
- Easy to remove condenser tank
- Heavy duty wheels with brake function

### Applications:

- Warehouses, workshops & factories
- Agricultural
- Hospitality
- Offices
- Showrooms
- Events (tents/marquees)

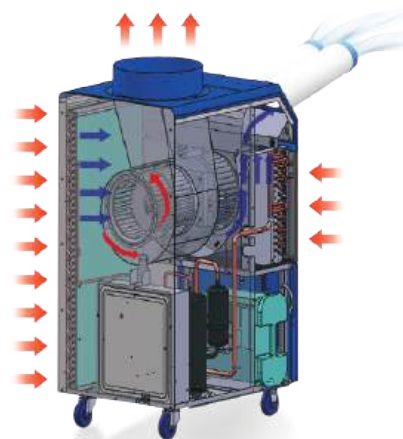
SPECIFICATIONS	UNIT	IPHC2-35
Capacity		
Cooling	Kw / BTU	4 / 13,600
Heating		4.3 / 14,800
Air Flow	L/S	143
Power Consumption		
Cooling	kW	1.58
Heating		1.41
Voltage/Frequency		220~240V/50Hz
Current		
Cooling	A	7
Heating		6.36
Plug Connection		3 Pin 10A
Refrigerant		R410A
Refrigerant Charge		1,100g
EER (Energy Efficient Ratio)	BTU/Wh	11
Air Grill		1
Fan Speed		6
Condensation Tank	L	12
Cooling Area	m <sup>2</sup>	32
Product Dimensions	mm	523x670x1044
Pack Dimensions	mm	545x695x1110
Weight	kg	86



WATCH ME

## What is a Portable Air Conditioner?

A portable air conditioner is a completely self-contained refrigerated air conditioning system housed within a heavy duty insulated cabinet on wheels. Ideal for applications where an installed system is not viable and for emergency and breakdown applications.



## How does it work?

A portable air conditioner works by using refrigerant to absorb heat from the air in a room and then expelling the heat outside. The refrigerant is a special fluid that can change from a liquid to a gas and back again. When the refrigerant is a liquid, it absorbs heat. When the refrigerant is a gas, it releases heat.



# Cooling

## Industrial Misting Fan IMF600



The IMF600 Heavy Duty Industrial Mobile Misting Fan uses a drum-style axial design to distribute mist up to 12 metres for wide coverage. Powered by an 800W motor with adjustable mist control, 90° oscillation, and a 90L tank providing up to 9 hours of operation, it delivers reliable cooling and dust suppression in demanding environments.

### Features:

- Heavy duty drum style misting fan
- Large air flow with greater effective distance
- Portable on wheels
- 90° Oscillation for greater coverage
- Covers an area up to 80m<sup>2</sup>
- Long lasting water tank up to 9 hours
- Adjustable misting control

### Applications:

- Warehouse, factories & workshops
- Construction sites
- Agriculture
- Outdoor events
- Dust & Waste control



SPECIFICATIONS	UNIT	IMF600
Air Flow	L/S m <sup>3</sup> /h	2666 / 160
Noise Level	dBa	<70
Motor	W	800
Voltage/Frequency	V	220~240
Current		
Plug Connection		3 Pin 10A
Fan Type		Axial
Effective Area	m <sup>2</sup>	50 - 80
Mist Distance	m	12
Tank Size	L	90
Consumption	L/h	10
Fan Speed		1
Product Dimensions	L*D*H	690*523*1730
Weight	kg	72



WATCH ME

## Mini Mancoolers

MC3, MC4



The Mini Mancooler range delivers powerful, portable cooling in a compact design for use where space is limited. Available in 300mm and 400mm sizes, these robust fans provide reliable airflow in demanding environments.

### Features:

- Robustly built
- Extracts dust, fumes and smoke
- Heavy duty frame
- Powder coated rolled steel casing
- Fitted with finger guards
- Can be fitted with ducting
- Vertical tilt adjustment
- Available as wall mounted or portable
- IP55 motor standard (IP65 available)
- Exe & Exd motors only available for MC4
- Made in Australia

### Applications:

- Warehouse, workshops & factories
- Construction sites
- Agriculture
- Mining
- Confined spaces



SPECIFICATIONS	UNIT	MC3-370-4	MC3-370-4-3	MC3-550-2	MC3-550-2-3	MC4-370-4	MC4-370-4-3	MC4-750-2	MC4-750-2-3
Diameter	mm	300	300	300	300	400	400	400	400
Motor	W	370	370	550	550	370	370	750	750
Pole		4	4	2	2	4	4	2	2
Voltage	V	240	415	240	415	240	415	240	415
Plug Connection		3 Pin 10A	4 Pin 10A	3 Pin 10A	4 Pin 10A	3 Pin 10A	4 Pin 10A	3 Pin 10A	4 Pin 10A
Air Flow	L/S	600	600	1140	1140	1250	1250	2120	2120
Weight	kg	25	25	27	27	30	30	35	35

Air flow stated is free air flow.



## Mobile Mancoolers

MC5, MC6, MC8, MC10



The Mobile Mancooler range is engineered for high-volume airflow in large, open, or hard-to-ventilate environments. These portable air circulators provide effective cooling for people, equipment and processes where general ventilation is limited.

### Features:

- Robustly built
- Circulate air to workers in enclosed or hot locations
- Extract dust, fumes and smoke
- Heavy duty frame and wheels
- Powder coated rolled steel casing
- Fitted with finger guards
- Vertical tilt adjustment
- IP55 motor standard (IP65 available)
- Exe & Exd motors are available on sizes starting from 400mm
- Made in Australia

### Applications:

- Warehouse, factories & workshops
- Construction sites
- Agriculture
- Mining



SPECIFICATIONS	UNIT	MC5-750-4	MC5-750-4-3	MC5-11-2	MC5-11-2-3	MC6-750-4	MC6-750-4-3	MC6-750-4-3-E	MC6-11-4	MC6-11-4-3
Diameter	mm	500	500	500	500	600	600	600	600	600
Motor	W	750	750	1100	1100	750	750	750	1100	1100
Pole		4	4	2	2	4	4	4	4	4
Voltage	V	240	415	240	415	240	415	400	240	415
Plug Connection		3 Pin 10A	3 Pin 10A	3 Pin 10A	3 Pin 10A	3 Pin 10A	3 Pin 10A	3 Pin 10A	3 Pin 10A	3 Pin 10A
Air Flow	L/S	2600	2600	3450	3450	3900	3900	3900	4500	4500

SPECIFICATIONS	UNIT	MC6-15-4	MC6-15-4-3	MC6-15-4-3E	MC8-15-4	MC8-15-4-3	MC8-22-4	MC8-22-4-3	MC10-3-4-3	MC10-55-6-3
Diameter	mm	600	600	600	800	800	800	800	1000	1000
Motor	W	1500	1500	1500	1500	1500	2200	2200	3000	5500
Pole		4	4	4	4	4	4	4	4	6
Voltage	V	240	415	400	240	415	240	415	415	415
Plug Connection		3 Pin 10A	3 Pin 10A	3 Pin 10A	3 Pin 10A	3 Pin 10A	3 Pin 10A	3 Pin 10A	3 Pin 10A	3 Pin 10A
Air Flow	L/S	5250	5250	5250	6800	6800	8820	8820		17,000

Air flow stated is free air flow. Intrinsically safe refers to motor Ex e.



## Industrial Pedestal Fans IFP500, IFP600, IFP650, IFP750, IFP850

**FANMASTER** *Premium* **3 YEAR WARRANTY**



The Premium Pedestal Fans are designed for powerful air movement in industrial and commercial environments. With a heavy-duty base, three-speed motor and 90° oscillation, they deliver durable and reliable performance across large areas.

### Features:

- Premium quality fans
- Full range of sizes to suit any application
- 3 speeds
- 90° adjustable oscillation
- Low wattage means cheaper running costs
- Quick release clips on guards for easy cleaning

### Applications:

- Warehouse, factories & workshops
- Offices
- Shops
- Lunchrooms
- Gymnasiums
- Garages
- Outdoor entertaining areas

SPECIFICATIONS	UNIT	IFP500	IFP600	IFP650	IFP750	IFP850
Diameter	mm	500	600	650	750	850
Motor	W	130	170	210	240	350
Plug Connection		3 Pin 10A	3 Pin 10A	3 Pin 10A	3 Pin 10A	3 Pin 10A
Maximum Air Flow	L/S	2166	3250	3833	5033	6500
Weight	kg	17	18	26	28	30
STAGE 1						
Power	w	97	120	148	175	255
Speed	rpm	1100	1100	1100	1100	1100
Noise	dB	48	52	55	58	68
Air Flow	L/S	1583	2083	2383	3566	4250
STAGE 2						
Power	w	106	130	175	195	283
Speed	rpm	1250	1250	1250	1250	1250
Noise	dB	50	56	60	70	82
Air Flow	L/S	1933	2500	2833	4500	5333
STAGE 3						
Power	w	130	170	210	240	350
Speed	rpm	1400	1400	1400	1400	1400
Noise	dB	55	62	68	75	88
Air Flow	L/S	2166	3250	3883	5033	6500

## Industrial Wall Fans IFW500, IFW600, IFW650, IFW750, IFW850

**FANMASTER** *Premium* **3 YEAR WARRANTY**



The Premium Wall Mounted Fan range delivers proven durability, high performance, and user-friendly operation. Built for industrial, commercial, and large residential use, these fans are designed for long service life and backed by a 3-year warranty.

### Features:

- Premium quality fans
- Full range of sizes to suit any application
- 3 speeds
- 90° adjustable oscillation
- Low wattage means cheaper running costs
- Pull cord switch for ease & safety
- Quick release clips on guards for easy cleaning

### Applications:

- Warehouse, factories & workshops
- Offices
- Shops
- Lunchrooms
- Gymnasiums
- Garages
- Outdoor entertaining areas

SPECIFICATIONS	UNIT	IFW500	IFW600	IFW650	IFW750	IFW850
Diameter	mm	500	600	650	750	850
Motor	W	130	170	210	240	350
Plug Connection		3 Pin 10A	3 Pin 10A	3 Pin 10A	3 Pin 10A	3 Pin 10A
Maximum Air Flow	L/S	2166	3250	3833	5033	6500
Weight	kg	14	15	16	17	19
STAGE 1						
Power	w	97	120	148	175	255
Speed	rpm	1100	1100	925	1100	1100
Noise	dB	48	52	45	58	68
Air Flow	L/S	1583	2083	2383	3566	4250
STAGE 2						
Power	w	106	130	175	195	283
Speed	rpm	1250	1250	1250	1250	1250
Noise	dB	50	56	55	70	82
Air Flow	L/S	1933	2500	2833	4500	5333
STAGE 3						
Power	w	130	170	210	240	350
Speed	rpm	1400	1400	1400	1400	1400
Noise	dB	55	62	68	75	88
Air Flow	L/S	2166	3250	3833	5033	6500

## Industrial Floor Fans IFF300A, IFF400U, IFF450U, IFF500U



Fanmaster's IFF Portable Floor Fans are high-performance industrial units, perfect for cooling large commercial and industrial areas and improving ventilation. Featuring heavy-duty metal construction, three speeds, and a tiltable head, they offer portable, durable air movement and come in four sizes (300mm, 400mm, 450mm, and 500mm).

### Features:

- Premium air circulating floor fans
- Variety of sizes
- 3 speed
- Low wattage motors
- Carry handle for ease of portability
- Vertical adjustment

### Applications:

- Warehouse, factories & workshops
- Offices
- Shops
- Lunchrooms
- Gymnasiums
- Garages
- Outdoor entertaining areas



SPECIFICATIONS	UNIT	IFF300A	IFF400U	IFF450U	IFF500U
Diameter	mm	300	400	450	500
Motor	W	50	100	110	150
Plug Connection		3 Pin 10A	3 Pin 10A	3 Pin 10A	3 Pin 10A
Maximum Air Flow	L/S	638	1200	1400	1600
Weight	kg	3	7	8	10
STAGE 1					
Power	w	31	67	70	90
Speed	rpm	950	950	950	950
Noise	dB	55	58	63	65
Air Flow	L/S	450	800	950	1083
STAGE 2					
Power	w	35	80	90	115
Speed	rpm	1150	1150	1150	1150
Noise	dB	58	60	66	68
Air Flow	L/S	550	966	1150	1,300
STAGE 3					
Power	w	50	100	110	150
Speed	rpm	1400	1400	1400	1400
Noise	dB	60	62	69	71
Air Flow	L/S	638	1200	1400	1600

## Commercial Fans ICF450P, ICF450W



The ICF450 is a stylish commercial fan designed for quiet and efficient air circulation in a variety of spaces. Featuring a 450mm blade, vertical adjustment, and 90° oscillation, it delivers smooth, reliable airflow with minimal noise.

### Features:

- Commercial 450mm air circulating fan
- Quiet, stylish and effective
- 3 Speeds
- 90° & Fixed oscillation
- Vertically adjustable
- Pull cord switch for ease & safety (ICF450W)
- Height adjustable pedestal (ICF450P)

### Applications:

- Warehouse, factories & workshops
- Offices
- Shops
- Lunchrooms
- Gymnasiums
- Garages
- Outdoor entertaining areas



SPECIFICATIONS	UNIT	ICF450P	ICF450W
Diameter	mm	450	450
Motor	W	130	130
Voltage		240	240
Maximum Air Flow	L/S	1910	1910
Current		0.54	0.54
Plug Connection		3 Pin 10A	3 Pin 10A
Fan Speed		3	3
Weight	kg	14	9
Type		Pedestal	Wall
STAGE 1			
Noise	dB	48	48
STAGE 2			
Noise	dB	50	50
STAGE 3			
Noise	dB	56	56

## Industrial Fans

NFFL45, NFPD75, NFWL75



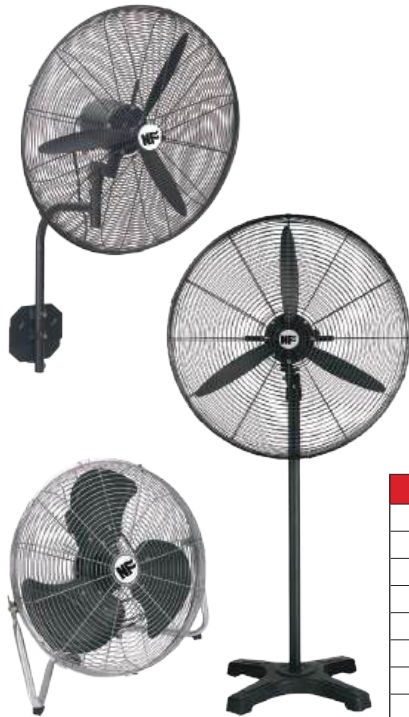
The NF Industrial Fan range is excellent for circulating air in a wide variety of applications such as offices, lunchrooms, cafeterias, warehouses, factories, etc. These fans come with a 3 speed motor and adjustable oscillation (Pedestal and Wall fan only). The fan's design and construction ensures that the fan circulates air both quietly and efficiently. Fans are energy efficient and are the most environmentally friendly way to increase air circulation and cool workers.

### Features:

- 3-speeds and adjustable
- Oscillation (Wall & Pedestal only)
- Low wattage means cheaper running costs

### Applications:

- Warehouse, factories & workshops
- Offices
- Shops
- Lunchrooms
- Gymnasiums
- Garages
- Outdoor entertaining areas



SPECIFICATIONS	UNIT	NFFL45	NFPD75	NFWL75
Diameter	mm	450	750	750
Type		Floor	Wall	Pedestal
Maximum Air Flow	L/S	2000	4800	4800
Motor	kW	0.165	0.28	0.28
Voltage	V	240	240	240
Plug Connection		3 Pin 10A	3 Pin 10A	3 Pin 10A
Fan Speed		3	3	3
Pallet Dimensions	mm		1170D x 1170L x 1800H	1170D x 1170L x 1800H
Pallet Weight	kg		190	300
Packing Dimensions - per unit	mm	580 x 225 x 570	820D x 820L x 190H	820D x 820L x 190H
Weight - per unit	kg	6.5	15	23

## Industrial Drum Fans DFF600, DFF900



The Industrial Drum Fans (600mm & 900mm) are robust floor units engineered for powerful, efficient air circulation in commercial and industrial environments. Available in compact and high-capacity models, the DFF Drum Fan range provides reliable cooling across a variety of spaces.

### Features:

- Available in two sizes: 600mm (compact) & 900mm (high-capacity)
- Adjustable blowing angle for targeted airflow
- Three-speed fan settings for comfort control
- Thermal overload protection and safety guard
- Powder-coated steel body with built-in wheels for portability
- Optimised blade design for quiet, smooth airflow
- Heavy-duty construction for commercial/industrial use cleaning

SPECIFICATIONS	DFF600	DFF900
Motor (W)	195	290
Voltage/Hz	240/50	240/50
Current (A)		
Plug Connection	3 Pin 10A	3 Pin 10A
RPM	1150	710
Air Volume L/s m³/min	195 3250	350 5833
Fan Speed	3	3
Fan Blade Diameter (mm)	600	900
Vertical Adjustment	Yes	Yes
Packaging Dimensions (mm)	760x290x770	1080x315x1115
Net Weight (kg)	17	30
Gross Weight (kg)	19	32



### Applications:

- Warehouses
- Manufacturing facilities
- Workshops and garages
- Food processing plants
- Construction sites
- Agricultural settings
- Event venues
- Emergency response

## INDUSTRIAL FLOOR FAN VELOCITY1.2



The 1.2m Industrial Floor Fan delivers powerful airflow of 10,555L/s, providing effective cooling for spaces up to 500m<sup>2</sup>. Built for heavy-duty performance, it is ideal for moving large volumes of air in industrial and commercial environments.

### Features:

- 45 m air delivery for long-distance cooling
- Variable speed control for adjustable airflow
- Quiet operation at 65 db
- Energy-efficient 600 W power use
- Iron safety nets with plastic coating
- 1.25 m fan blade diameter
- Two fixed and two swivel casters for easy movement
- Strong construction for tough environments
- Durable PP housing, base, and reinforced blades for long-lasting performance

SPECIFICATIONS	VELOCITY1.2
Motor (W)	600
Voltage/Hz	220/60
Current (A)	3.95
Plug Connection	3 Pin 10a
Fan Speed	Variable
Max Speed	440 RPM
Fan Blade Diameter (m)	1.25
Fan Blade Material	Reinforced PP
Motor Type	PMSM Motor
Airflow (L/s)	10,555
Airflow Distance (m)	40-45
Coverage Area (m <sup>2</sup> )	400-500
dBa	65 (distance 5m)
Measurements (cm)	L150xW79xH165
Net Weight (kg)	60

### Applications:

- Factories & warehouses
- Workshops & garages
- Event spaces & venues
- Agriculture

# WHAT IS AIR CIRCULATION?

Air circulation is the movement of air in a room or building. It is important for maintaining good indoor air quality and comfort. Air circulation helps to:



- Remove stale air and pollutants from the air.
- Distribute heat or cool air evenly throughout the room.
- Prevent the buildup of moisture and mould.
- Create a more comfortable environment.



## Industrial HVLS Fans

HVLS25, HVLS40, HVLS49, HVLS73



**LARGE AIR VOLUME**



**HIGH EFFICIENCY ENERGY SAVING**

The Fanmaster HVLS Fan range is highly efficient and energy-saving. Utilising a permanent magnet brushless motor made of high-quality NdFEB permanent magnets with a temperature resistance of 130°C and no demagnetisation, these fans provide a maintenance-free and long-lasting motor. The blades are crafted from polymer composite material and designed with a high lift resistance ratio aviation airfoil. The wingtip technology effectively reduces air vortex movement, minimising energy loss caused by vortex. This range features 15 innovative safety features to ensure the safe operation of the fans.



SPECIFICATION									
Model No	Dia (m)	Speed (rpm)	Power (w)	Voltage (v)	Air Volume		Coverage (m²)	Optimum use area (m²) Air Velocity ≥ 1m/s	Main Fan Weight (kg)
					l/s	m³/min			
HVLS25	3	120	150	220~240	60,000	3,600	225	56	31.5
HVLS40	4	95	420	220~240	125,000	7,500	550	220	47.8
HVLS49	4.9	85	720	220~240	175,000	10,500	700	360	54.5
HVLS73	7.3	56	1250	220~240	296,666	17,800	1375	840	83.6

# Handheld Jet Fan

PROBLO-MINI

**ProBlo**  
BY FANMASTER

**1 YEAR**  
WARRANTY



Small but mighty, the PROBLO-MINI delivers impressive airflow in an ultra-compact design. Perfect for on-the-go cooling, this portable powerhouse easily fits in your bag, car, or toolkit, ready to take on any task.

Features:

- USB-C rechargeable with built-in lithium battery for long-lasting, hassle-free use
- Rugged construction using durable materials to withstand tough conditions
- Versatile attachments including vacuum and atomising nozzles for dusting, debris removal, and light clean-ups

Applications:

- Workstations: Blow away dust and debris from desks, benches, and tools
- Automotive: Clean car vents, dashboards, carpets, and tight crevices
- Outdoor gear: Maintain camping gear, hiking equipment, and portable tools
- Work tools: Clear sawdust, metal shavings, or grime from power tools

SPECIFICATION	
Rated Output	60W
Rated Input	11.1V
Air Displacement	35m/s
Speed	4 Speed 1: Max 11m/s Speed 2: Max 16m/s Speed 3: Max 22m/s Speed 4: Max 35m/s
RPM	100,000
Charging Interface	Type-C
Battery Capacity	1100mah
Charging Time	2 Hours
Battery Life	8min-80min
Working Temperature	0°C~40°C
Product Size	133*71*37mm
Product Weight	280g
Warranty	1 Year

# Handheld Jet Fan

PROBLO-MAX

**ProBlo**  
BY FANMASTER

**1 YEAR**  
WARRANTY



Built for tough environments, the PROBLO-MAX delivers powerful, high-velocity airflow for cooling, ventilation and clean-up. Its compact, durable design makes it ideal for industrial, commercial and outdoor use.

Features:

- Strong airflow with large, efficient blades for cooling in hot conditions
- Built-in LED light for better visibility in dark areas
- Long-lasting battery with up to 80 minutes of use
- Adjustable speed to suit different airflow needs

Applications:

- Clear dust and debris from workbenches, tools, and equipment.
- Clean out car interiors, electronics, and hard-to-reach areas.
- Speed up the drying process of wet surfaces.
- Enhance airflow in confined spaces.

SPECIFICATION	
Power Output	750W
Rated Input	16.8V
Air Displacement	55m/s
Speed	Variable Max 55m/s
RPM	50,000
Charging Interface	DC
Battery Capacity	4000mah
Charging Time	3 Hours
Battery Life	12min-80min
Working Temperature	0°C~40°C
Product Size	282*115*73mm
Product Weight	830g
Warranty	1 Year



Cooling

# How to Choose Your Cooler



Choosing the right cooler depends on your space size, the type of work being done, and how often cooling is needed. The right match gives you maximum comfort with minimal running costs.

Portable Coolers

Portable evaporative coolers and air conditioners are ideal for workshops, garages, and smaller areas where conditions change. They're easy to move and offer flexible, targeted cooling.

Fixed Coolers

For larger or permanent spaces, fixed evaporative coolers provide continuous, high-volume airflow—perfect for production floors and big workshops.

As a guide, portable units suit smaller enclosed spaces, while fixed systems perform best in large open areas. Evaporative coolers work well in dry climates; air conditioners suit humid ones.

M <sup>2</sup>	EVAPORATIVE	AIR CONDITIONER	MISTING FAN
SPOT COOLING	PAC125-ADC PAC280-A PACISD PACIMD	IAC-27 IAC-45 IAC-65 IPAC-47 IPAC-61 IPAC-94	IMF600
30	PAC125-ADC	-	-
40	-	IPAC-47	-
50	PAC280-A	IPAC-61	IMF600
100	-	IPAC-94	-
150	PACISD PACIMD	-	-





## Air Movement

# How to Choose Your Fan

Selecting the right fan starts with understanding your airflow requirements and the environment it will operate in. Consider the size of the area, the type of application, and the amount of air movement needed to maintain comfort or meet ventilation standards.

## Portable Fans

Portable fans are ideal for temporary setups or smaller areas that require directed airflow. They're easy to move between workstations, helping to improve comfort, remove fumes, or assist with drying tasks.

## Wall-Mounted and Pedestal Fans

For medium-sized spaces like workshops, loading bays, and gyms, wall-mounted and pedestal fans provide effective air circulation without taking up valuable floor space.

## Industrial Drum and Misting Fans

These are suited for larger open areas where strong, wide-reaching airflow is needed. Misting fans are particularly effective for cooling and dust suppression in hot or dusty environments.

At Fanmaster, we'll help you find the ideal system for efficient, reliable comfort year-round.

AIRFLOW L/S	FLOOR	PEDESTAL	WALL	MINI MANCOOLER	MANCOOLER
600	-	-	-	MC3-370-4	-
683	IFF300A	-	-	-	-
1140	-	-	-	MC3-550-2	-
1200	IFF400U	-	-	-	-
1250	-	-	-	MC4-370-4	-
1400	IFF450U	-	-	-	-
1600	IFF500U	-	-	-	-
2000	NFFL45	-	-	-	-
2120	-	-	-	MC4-750-2	-
2167	-	IFP500	IFW500	-	-
2600	-	-	-	-	MC5-750-4
3250	-	IFP600	IFW600	-	-
3450	-	-	-	-	MC5-11-2
3667	-	IFP650	IFW650	-	-
3900	-	-	-	-	MC6-750-4
4500	-	-	-	-	MC6-11-4
4800	-	NFPD75	NFWL75	-	-
5033	-	IFP750	IFW750	-	-
5250	-	-	-	-	MC6-15-4
6500	-	IFP850	IFW850	-	-
6800	-	-	-	-	MC8-15-4
8820	-	-	-	-	MC8-22-4
17000	-	-	-	-	MC10-55-6-3





Types of Heating	34
What's the Difference Between Direct Fired vs Indirect Fired Heaters?	34
How To Choose Your Heater	34



# HEATING PRODUCTS


**27**

## DIESEL RADIANT HEATERS

Diesel radiant heaters. Sizes from 15KW to 40KW. Clean burning, ideal for areas with limited ventilation


**28**

## ELECTRIC RADIANT HEATERS

Electric radiant heaters


**30**

## GAS RADIANT HEATERS

Gas radiant heaters. Sizes from 4KW to 50KW, Portable, wall or ceiling mount options


**31**

## DIESEL SPACE HEATERS - DIRECT FIRED

Diesel space heaters direct fired. Sizes from 20KW to 50KW. Use in open or well-ventilated areas


**31**

## DIESEL SPACE HEATERS - INDIRECT FIRED

Diesel space heaters indirect fired. Sizes from 20KW to 50KW. Ideal for areas with limited ventilation


**32**

## ELECTRIC SPACE HEATERS

Electric space heaters. Sizes from 2KW to 30KW. No fumes, ideal for personal heating


**33**

## GAS SPACE HEATERS

Gas space heaters direct fired. 20KW option. Use in open or well-ventilated areas

# PRODUCTS BY APPLICATION



PRODUCTS BY APPLICATION	HDR20 HDR40	VAL6-DAYSTAR VAL6-KBEIS VAL6-EPX	CF2000	HIH2000	SORRENTO	APOLLO
CONSTRUCTION						
HEATING SITES	■	■				
HEATING WORKERS	■	■	■			
DRYING	■	■				
WAREHOUSE, FACTORIES, WORKSHOPS & GARAGES						
SPACE HEATING						
SPOT HEATING						
RESTAURANTS, RETAIL & OFFICES						
SPACE HEATING						
SPOT HEATING	■	■	■	■	■	■
AGRICULTURE						
HEATING LIVE STOCK	■	■	■			
HEATING GREENHOUSES						
MARQUEE/TENTS, EVENTS, MILITARY						
OUTDOOR HEATING	■	■	■			
TENT HEATING			■			
RENTAL & EMERGENCY BREAKDOWN						
SPACE HEATING						
SPOT HEATING	■	■	■			

# PRODUCTS BY APPLICATION



PRODUCTS BY APPLICATION	GRH GRHP	GTU GTS	IDH3-20 IDH3-30 IDH3-50	IDH2-20IN IDH2-50IN	IGH2-20	IFH PESH HES
CONSTRUCTION						
HEATING SITES			■	■	■	■
HEATING WORKERS	■		■	■	■	■
DRYING				■		■
WAREHOUSE, FACTORIES, WORKSHOPS & GARAGES						
SPACE HEATING			■	■	■	■
SPOT HEATING	■	■				
RESTAURANTS, RETAIL & OFFICES						
SPACE HEATING				■		
SPOT HEATING	■	■				
AGRICULTURE						
HEATING LIVE STOCK		■		■	■	■
HEATING GREENHOUSES		■	■	■	■	
MARQUEE/TENTS, EVENTS, MILITARY						
OUTDOOR HEATING	■			■		
TENT HEATING	■			■		■
RENTAL & EMERGENCY BREAKDOWN						
SPACE HEATING			■	■	■	■
SPOT HEATING	■					



## Diesel Radiant Heaters HDR20, HDR40



The HDR Series Diesel Radiant Heaters deliver efficient, instant radiant heat for industrial and commercial use. Designed for outdoor and well-ventilated environments, they provide direct, targeted heating for demanding applications.



### Features:

- Easy installation
- Functions on both diesel and kerosene
- Ceramic Fibre Combustion Chamber
- Adjustable temperature
- Fuel gauge
- Cut off protection
- Fuel cut off
- Time Delay
- Portable & easy to move

### Applications:

- Warehouse, workshops & factories
- Outdoors
- Garages



WATCH ME

SPECIFICATIONS	UNIT	HDR20	HDR40
Heating Output	kW/BTU	20 / 68,240	40 / 136,480
Voltage		220-240V 50Hz	220-240V 50Hz
Plug Connection		3 Pin 10A	3 Pin 10A
Fuel Type		Diesel or Kerosene	Diesel or Kerosene
Tank Capacity	L	10.5	38
Fuel Consumption	L/H	1.7	3.8
Net Weight	kg	18.3	27.2
Gross Weight	kg	21	31.7
Product Measurements	mm	575*340*635	925*635*860
Packing Measurement	mm	580*380*605	710*690*940

For industrial use only. Must be used in well ventilated areas.

## Diesel Radiant Heaters VAL6-DAYSTAR, VAL6-KBEIS, VAL6-EPX



The VAL6 range of diesel-powered infrared heaters is renowned for superior build quality, high performance, and advanced safety features. Manufactured in Japan, they deliver targeted, efficient heat without drying the air, combining durability and fuel efficiency for tough industrial, commercial, agricultural and outdoor applications.



### Features:

- Radiant heat like the sun
- Functions on both diesel and kerosene
- Heats outdoors effectively
- Heat transfer directly to objects
- Dust-free and clean
- Clean burning - odorless and smokeless
- Energy-efficient
- Portable and easy to move

### Applications:

- Warehouse, workshops & factories
- Agriculture
- Construction sites
- Commercial spaces
- Outdoor events

SPECIFICATIONS	UNIT	VAL6-DAYSTAR	VAL6-KBEIS	VAL6-EPX
Heating Output	kW/BTU	15 / 13,000	32.5 / 28,000	40.7 / 35,000
Voltage		240	240	240
Plug Connection		3 Pin 10A	3 Pin 10A	3 Pin 10A
Fuel Type		Diesel or Kerosene	Diesel or Kerosene	Diesel or Kerosene
Tank Capacity	L	10	35	58
Fuel Consumption	L/H	1.5	2.67	3.19
Heat Settings		1	1	2
Weight	kg	18	38	50
Product Measurements	mm	576*310*593	732*655*825	1232*643*970

For industrial use only. Must be used in well ventilated areas.

## Carbon Fibre Radiant Heater CF2000



The Fanmaster Carbon Fibre Electric Heater warms in just 3 seconds using advanced carbon infrared technology. With up to 95% thermal efficiency, it heats objects directly for instant comfort while saving energy. Safe for indoor and outdoor use, it produces no gases, odours, or chemicals.

### Features:

- Portable or wall mount
- Multiple heat settings
- Remote control and 24 hour timer control
- Silent operation
- Ultra-low glare, gentle lighting
- Guaranteed durability for 10,000 hours
- Ideal heating solution for residential, business, and outdoor applications.

### Applications:

- Offices
- Commercial - hotels, kitchens
- Warehouses, workshops, factories
- Rental/Hire restaurants
- Patio, gazebos, backyards, balconies

SPECIFICATIONS	CF2000
Power	2000W
Voltage	220~240V / 50Hz
Plug Connection	3 Pin 10A
Element	Carbon Fibre Lamp
Heater Type	Electric Radiant/ Infrared
IP Rating	IP55
Install Type	Pedestal or Wall Mount
Heating Area	12 m <sup>2</sup>
Measurements	900*170.4*50 mm
Product Weight	3.7 kg
Master Carton Measurements	990*370.5*160.5
Carton Weight	7.6



WATCH ME

## Electric Fibre Radiant Heater HIH2000



The Fanmaster HIH2000 is a powerful infrared heater that generates 2000 watts of radiant heat. This means that it can warm both objects and people directly, without the need to heat up the air first. This makes it an ideal heater for outdoor use, as it can provide instant warmth on chilly evenings.

### Features:

- Infrared heat
- IP65 Rated
- Heating area 6-12m<sup>2</sup>
- Silent operation
- Ultra-low glare, soft light
- Overheating Protection
- Hanging/mounting bracket included for installation
- Aluminum housing with 304 stainless steel mesh (rated IP65)

### Applications:

- Patios, gazebos, backyards, Balconies, decks, verandahs
- Outdoor dining Areas
- Hospitality
- Garages, workshops

SPECIFICATIONS	HIH2000
Power	2000W
Voltage	220~240V / 50Hz
Plug Connection	3 Pin 10A
Element	Low Glare Amber Lamp
Heater Type	Electric Radiant/ Infrared
IP Rating	IP65
Install Type	Ceiling/Wall mount or Pedestal
Heating Area	6-12 m <sup>2</sup>
Measurements	46*19*7.5cm (12cm depth including mounting plate)
Product Weight	3.5
Power Cord Length	1.8

## Electric Radiant Heaters SORRENTO



The Tansun Sorrento is a powerful and efficient infrared heater designed for heating large indoor or outdoor areas. Weatherproof and easy to install, it comes backed by a 2-year warranty.

### Features:

- Quartz infrared Heater
- Aluminium extrusion body
- Available in 2kW, 4kW & 6kW
- Low glare
- Durable in all weather conditions
- Easy installation
- Suitable for indoor & outdoor use

### Applications:

- Commercial
- Warehouses, factories, workshops
- Hospitality
- Garages
- Terraces, patios
- Sports halls
- Zoo's
- Churches
- Conservatories



SPECIFICATIONS	UNIT	SORRENTO-SINGLE2	SORRENTO-DOUBLE4	SORRENTO-TRIPLE6
Power	kW	2	4	6
Voltage		230	230	230
Plug Connection		Hard wired	Hard wired	Hard wired
Lamps x Power		1 x 2	2 x 2	3 x 2
Heating Area	m <sup>2</sup>	11	25	36
IP Rating		IP55	IP55	IP55
Min Height from Floor	m	2.5	3.5	4.5
Min distance from ceiling	m	0.3	0.5	0.5
Min Distance from Side Wall	m	1	1	1
Weight Without Guard	kg	3.4	5.6	8
Dimensions	mm	402*227*323	790*227*323	1178*227*323

## Electric Radiant Heaters APOLLO



The Apollo Radiant Heater is a powerful and efficient solution for heating large spaces. Using quartz infrared technology to heat objects directly rather than the surrounding air, it provides effective warmth across wide areas.

### Features:

- Quartz infrared heater
- Aluminium extrusion body
- Available in 4kW & 6kW
- Low glare
- Easy installation
- Suitable for indoor or protected applications

### Applications:

- Commercial
- Warehouses, factories, workshops
- Hospitality
- Garages
- Terraces, patios
- Sports halls
- Zoo's
- Churches
- Conservatories



SPECIFICATIONS	UNIT	APOLLO-DOUBLE4	APOLLO-TRIPLE6
Power	kW	4	6
Voltage		230	400
Plug Connection		Hard wired	Hard wired
Lamps x Power		2 x 1	3 x 2
Heating Area	m <sup>2</sup>	46.8	65.5
Min Height from Floor	m	2.5	3
Min Distance from Ceiling	m	0.15	0.5
Min Distance from Side Wall	m	1	1.5
Weight Without Guard	kg	6	8
Dimensions	mm	857*255*110	1282*25*110

## Gas Tube Radiant Heaters

GTS, GTU

**RG**  
**ROBERTS GORDON**

**3 YEAR**  
**WARRANTY**



### Features:

- Natural or LPG
- Aesthetically pleasing
- Minimal dust movement
- Minimal maintenance
- Quiet, comfortable, gentle & uniform heat
- Fuel efficient, quick heat recovery, low heating/electric costs

### Applications:

- Hospitality - restaurants, cafe's
- Livestock farms
- Manufacturing facilities
- Recreational facilities
- School halls
- Airport hangars
- Warehouse, workshops & factories
- Retail showrooms & outlets

PART NO.	TYPE	HEATING AREA M <sup>2</sup>	HEAT INPUT KW	HEAT INPUT MJ/H	FUEL TYPE	VOLTAGE	GAS	TUBE LENGTH M	OVERALL HEATER LENGTH M	MIN. INSTALL HEIGHT M	REC. INSTALL HEIGHT M
GTS-15-LPG	Straight/Linear	49	15	54	LPG	240	0.6	6	6.8	3.5	3.5
GTS-15-NG	Straight/Linear	49	15	54	Natural Gas	240	1.4	6	6.8	3.5	3.5
GTS-25-LPG	Straight/Linear	90	25	90	LPG	240	0.9	9	9.8	3.5	4
GTS-25-NG	Straight/Linear	90	25	90	Natural Gas	240	2.4	9	9.8	3.5	4
GTS-35-LPG	Straight/Linear	130	35	125	LPG	240	1.3	12	12.8	4.6	5
GTS-35-NG	Straight/Linear	130	35	125	Natural Gas	240	3.4	12	12.8	4.6	5
GTS-40-LPG	Straight/Linear	143	40	138	LPG	240	1.5	12	12.8	5	5.5
GTS-40-NG	Straight/Linear	143	40	138	Natural Gas	240	3.8	12	12.8	5	5.5
GTS-50-LPG	Straight/Linear	240	50	180	LPG	240	1.9	15	15.8	5	7.5
GTS-50-NG	Straight/Linear	240	50	180	Natural Gas	240	4.8	15	15.8	5	7.5
GTU-15-LPG	Straight/Linear	28	15	54	LPG	240	0.6	3	3.8	3.5	3.5
GTU-15-NG	Straight/Linear	28	15	54	Natural Gas	240	1.4	3	3.8	3.5	3.5
GTU-25-LPG	Straight/Linear	49.5	25	90	LPG	240	0.9	4.5	5.3	4	4.5
GTU-25-NG	Straight/Linear	49.5	25	90	Natural Gas	240	2.4	4.5	5.3	4	4.5
GTU-30-LPG	Straight/Linear	63	30	110	LPG	240	1.1	6	6.9	4.5	4.5
GTU-30-NG	Straight/Linear	63	30	110	Natural Gas	240	2.9	6	6.9	4.5	4.5
GTU-35-LPG	Straight/Linear	70	35	125	LPG	240	1.3	6	6.9	5	5
GTU-35-NG	Straight/Linear	70	35	125	Natural Gas	240	3.4	6	6.9	5	5
GTU-40-LPG	Straight/Linear	77	40	138	LPG	240	1.5	6	6.9	5	5.5
GTU-40-NG	Straight/Linear	77	40	138	Natural Gas	240	3.8	6	6.9	5	5.5
GTU-50-LPG	Straight/Linear	127.5	50	180	LPG	240	1.9	7.5	8.4	5	7.5
GTU-50-NG	Straight/Linear	127.5	50	180	Natural Gas	240	4.8	7.5	8.4	5	7.5
GTU-50-LPG-9	Straight/Linear	-	50	180	LPG	240	1.9	-	-	-	-
GTU-50-NG-9	Straight/Linear	-	50	180	Natural Gas	240	4.8	-	-	-	-
GTU-50-LPG-12	Straight/Linear	-	50	180	LPG	240	1.9	-	-	-	-
GTU-50-NG-12	Straight/Linear	-	50	180	Natural Gas	240	4.8	-	-	-	-

## Gas Radiant Heaters

GRH, GRHP

**AIRA**

**1 YEAR**  
**WARRANTY**



### Features:

- Wall mounted or portable units available
  - Available in LPG or Natural Gas
  - Excellent sized outdoor heater
  - Variety of sizes available for many different applications
  - Portable models are available in LPG only. Supplied complete with trolley, hose & regulator
- \*45kg gas bottle not included

### Applications:

- Hospitality - restaurants, cafe's
- Outdoor entertainment areas



WALL MOUNT - SPECIFICATIONS	UNIT	GRH16LP	GRH16NG	GRH24LP	GRH24NG	GRH48LP	GRH48NG
Heat Input	MJ/kW	16 / 4.44		24 / 7.0		48 / 14	
Heating Area - Spot	m²	19		28		56	
Heating Area - Total	m²	25		37		74	
Gas Pressure - LPG	KPA	Min: 2.75 Max: 4	-	Min: 2.75 Max: 4	-	Min: 2.75 Max: 4	-
Gas Pressure - Natural Gas	KPA	-	Min: 0.98 Max: 4	-	Min: 0.98 Max: 4	-	Min: 0.98 Max: 4
Gas Connection		3/8" copper flare	1/2" copper flare	3/8" copper flare	1/2" copper flare	3/8" copper flare	1/2" copper flare
Approx. Height from Floor	m	2.5		2.7 - 3.4		3.9 - 4.9	
Ceiling Clearance	m	1.1					
Weight	kg	5.6					
Dimensions - Heater Head	mm	(W)401x(D)180x(H)334		(W)499x(D)180x(H)334		(W)793x(D)180x(H)334	

PORTABLE SPECIFICATIONS	UNIT	GRHP16LP	GRHP24LP
Heat Input	MJ/kW	16 / 4.44	24 / 7.0
Heating Area - Spot	m <sup>2</sup>	19	28
Heating Area - Total	m <sup>2</sup>	25	37
Gas Pressure - LPG	KPA	Min: 2.75 Max: 4	
Gas Connection		3/8" copper flare	
Ceiling Clearance	m	1.1	
Portable Stand Adjustment	mm	1800 to 2300	



# Heating

## Diesel Space Heaters IDH3-20, IDH3-30, IDH3-50

Direct-Fired



WATCH ME

The IDH3 Diesel Space Heater range delivers powerful, immediate heating with efficient direct-fired diesel technology. Available in 20kW, 30kW, and 50kW models, they feature durable steel construction, automatic ignition, and robust safety systems for reliable

### Features:

- Direct fired space heater designed to provide instant effective heat
- Functions on both diesel and kerosene
- Two fuel filters - tank inlet & suction filter
- Integrated fuel tank with fuel gauge
- Stainless steel combustion chamber
- Durable wheels and heavy duty handle for mobility

### Applications:

- Warehouse, workshops & factories
- Agriculture
- Construction sites
- Events & military
- Rental & emergency

SPECIFICATIONS	UNIT	IDH3-20	IDH3-30	IDH3-50
Heating Output	kW/ BTU	20 / 68,240	20 / 102,360	50 / 170,600
Heating Area	m <sup>2</sup>	up to 200	up to 300	up to 500
Voltage		220-240V 50Hz	220-240V 50Hz	220-240V 50Hz
Power	W		230	340
Plug Connection		3 Pin 10A	3 Pin 10A	3 Pin 10A
Air Flow	L/S	153	200	305
Fuel Type		Diesel or Kerosene	Diesel or Kerosene	Diesel or Kerosene
Tank Capacity	L	19	34	50
Fuel Consumption	L/H	1.65	2.4	4.0
Continuous Run Time	Hr	11	14	12.5
Pressure	Bar	0.32	0.31	0.45
Fan Speed		1	1	1
Heat Settings		1	1	1
Weight	kg	14.9 / 17	22 / 25	28 / 32
Cable Length		1.3	1.3	1.3
Fuel Cut Off Protection		Yes	Yes	Yes
Malfunction Detection Light		Built In	Built In	Built In
Product Measurements	mm	752*305*430	860*520*610	1010*555*610

For industrial use only. Must be used in well ventilated areas.

## Diesel Space Heaters IDH2-20IN, IDH2-50IN

Indirect-Fired



WATCH ME

The IDH2 Diesel Space Heater – Indirect Fired series provides efficient, clean, and reliable heating for large or enclosed spaces. With a high-performance indirect combustion system that vents fumes externally, they deliver powerful heat output for industrial, commercial, and construction environments.

### Features:

- Indirect Fired Diesel Heater
- Functions on both diesel and kerosene
- Flue System positioned on top of heater
- Portable on wheels
- Cut off protection; flame sensor; if no fuel, heater will cut out
- Stainless steel combustion chamber with fan cooling
- Ideal for areas with limited ventilation

### Applications:

- Warehouses, workshops & factories
- Construction sites
- Agriculture

SPECIFICATIONS	UNIT	IDH2-20IN	IDH2-50IN
Heating Output	kW/BTU	20 / 68,240	50 / 170,600
Heating Area	m <sup>2</sup>	up to 200	up to 500
Heating Type		Indirect Fired	Indirect Fired
Voltage		240V 50Hz	240V 50Hz
Power	W	230	750
Plug Connection		3 Pin 10A	3 Pin 10A
Air Flow	L/S	166	555
Fuel Type		Diesel or Kerosene	Diesel or Kerosene
Tank Capacity	L	38	69
Fuel Consumption	L/H	1.9	4.7
Continuous Run Time	Hr	12.6	14.7
Pressure	Bar	0.38	10.5
Heat Settings		1	1
Weight	kg	22 / 24	59 / 65

For industrial use only.

## Electric Space Heater

HES2.4



### Features:

- Multiple heat settings
- Adjustable thermostat
- Ideal for personal heating
- Heavy duty carry handle
- Overheat & tilt switch protection
- Can be used as fan only

### Applications:

- Warehouse, workshops & factories
- Agriculture
- Construction sites
- Events & military
- Rental & emergency
- Drying
- Load bank testing
- Areas where the naked flame of a gas or diesel fired heaters cannot be used



WATCH ME

The HES2.4 is a 2400W electric space heater that provides gentle, fan-forced warm airflow for heating or drying in well-insulated, draught-free spaces up to 12m<sup>2</sup>. Compact and portable, it features two heat settings, safety protection, and a fan-only mode for year-round use.

SPECIFICATIONS	UNIT	HES2.4
Heating Output	kW	2.4
Heating Area	m <sup>2</sup>	12
Voltage	V	240
Current	A	10
Motor	W	0.24
Plug Connection		3 Pin 10A
Air Flow	L/S	57
Fan Speed		1
Heat Settings		2

## Industrial Electric Fan

IFH-2, IFH-3, IFH-5,  
IFH-9, IFH-15

### Features:

- Multiple heat settings
- Adjustable thermostat up to 40°C
- Overheat protection
- Heavy duty carry handle
- Single phase 240v or 3 phase 415v
- Can be used as fan only

### Applications:

- Warehouse, workshops & factories
- Agriculture
- Construction sites
- Events & military
- Rental & emergency
- Drying
- Load bank testing
- Areas where the naked flame of a gas or diesel fired heaters cannot be used

The IFH Industrial Electric Fan Heaters provide safe, clean, and efficient heating for workshops, warehouses, construction sites, and other industrial spaces. With a robust, traditional design, they are ideal for both space heating and personal spot heating in larger environments where targeted warmth is required.

SPECIFICATIONS	UNIT	IFH-2	IFH-3	IFH-5	IFH-9	IFH-15
Heating Output	kW	2	3	5	9	15
Heating Area	m <sup>2</sup>	10	15	25	45	75
Voltage	V	240	240	415	415	415
Current	A	8.3	12.5	6.94	12.52	20.82
Motor	W	0.40	0.40	0.55	0.55	0.55
Plug Connection		3 Pin 10A	3 Pin 10A	4 Pin 10A	4 PIN 20A	4 PIN 32A
Air Flow	L/S	33	142	142	222	472
Fan Speed		1	1	1	1	1
Heat Settings		2	2	3	2	3

## Portable Electric Space Heater

PESH9, PESH15, PESH30



### Features:

- Multiple heat settings
- Safety cut-off switch
- Adjustable thermostat
- Run on fan timer
- Adjustable airflow direction
- Portable with wheels (PESH15/30)
- Portable with carry handle (PESH9)
- Can be used as fan only

### Applications:

- Warehouse, Workshops & Factories
- Agriculture
- Drying
- Events
- Load bank testing
- Areas where the naked flame of a gas or diesel fired heaters cannot be used

The Portable Electric Space Heaters (PESH Series) are heavy-duty three-phase units that provide safe, efficient, and fume-free heat for industrial and commercial environments. Available in 9kW, 15kW, and 30kW models, they are ideal for enclosed spaces with limited ventilation, offering a cleaner alternative to fuel-based heaters.

SPECIFICATIONS	UNIT	PESH9	PESH15	PESH30
Heating Output	kW	9	15	30
Heating Area	m <sup>2</sup>	45	75	150
Voltage	V	415V / 50Hz	415V / 50Hz	415V / 50Hz
Current	A	12.52	20.82	41.74
Plug Connection		5 Pin 20A	5 Pin 32A	5 Pin 50A
Manual Reset		Yes	Yes	Yes
IP Rating		IP24	IP24	IP24
Airflow	L/S	132	261	400
Measurements	mm	393*395*563	514*541*869	652*617*1018
Weight	kg	10.7	20	30
Fan Speed		1	1	1
Heat Settings		2	2	2
Angle Adjustment		20°	20°	20°
Cable Length	m	1.8	3	3

## Portable Heater Blower PHB3-9, PHB3-15



The PHB3 Series Portable Heater Blowers deliver powerful and reliable heating, designed and manufactured in Australia to the highest standards. Built for commercial and industrial use, these electric space heaters provide clean, efficient heat without emissions or fumes, making them ideal for enclosed spaces where air quality is critical.

### Features:

- Robustly built
- Heavy duty frame
- Powder coated rolled steel casing
- High quality & heavy duty finned tubular elements
- No naked flame
- Fitted with finger guards
- Vertical tilt adjustment
- Thermal cut-outs & run on timer for safety
- Mobile or wall mount options also available
- Made in Australia

### Applications:

- Warehouse, workshops & factories
- Construction sites
- Agriculture
- Drying
- Areas where the naked flame of a gas or diesel fired heaters cannot be used

SPECIFICATIONS	UNIT	PHB3-9	PHB3-15
Heating Output	kW/BTU	9 / 30,708	15 / 51,180
Heating Area	m <sup>2</sup>	45	75
Air Flow	L/S	630	630
Motor	kW	0.75	0.75
Voltage	V	240	415
Current	A	12.52	20.82
Plug Connection		5 Pin 20A	5 Pin 32A
Fan Speed		1	1
Heat Settings		1	1

\*This unit will not plug into a standard residential power outlet, if you are unsure please contact us before purchasing.  
NOTE: We advise customers to use in-house electricians or a local contractor for variations.

## Gas Space Heater (LPG) IGH2-20



The Fanmaster IGH2-20 is a portable 20kW LPG fan heater that delivers instant, reliable heat for industrial, agricultural, and commercial applications, complete with hose, regulator, and built-in safety features. Compact and durable, it is ideal for warehouses, workshops, building sites, and drying applications, but must be operated in well-ventilated areas.

### Features:

- Lightweight & portable LPG fan heater
- Easy installation
- Instantaneous heat
- Heats up to 200m<sup>2</sup>
- Comes with hose & regulator
- Stainless steel combustion chamber
- Safety features - over temperature, electrical & fuel cut off

### Applications:

- Warehouses, workshops & factories
- Construction sites
- Agriculture

SPECIFICATIONS	UNIT	IGH2-20
Heating Output	kW/BTU	20 / 68,240
Heating Area	m <sup>2</sup>	up to 200
Air Flow	L/S	139
Gas Type		ULPG
Power Consumption	W	200
Voltage	V	220~240V / 50Hz
Current	A	0.80
Plug Connection		3 Pin 10A
Regulator Pressure Output	KPA	61
Fuel Consumption	kg/hr	1.42
Min. Gas Cylinder Size	kg	15
Min. Volume of Room	m <sup>3</sup>	360
Weight	kg	8.1/9

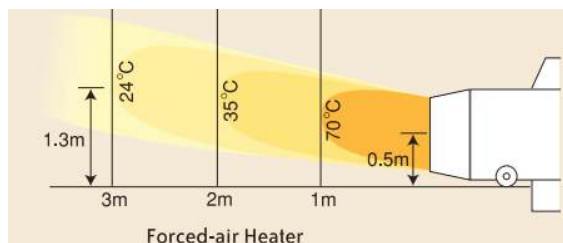
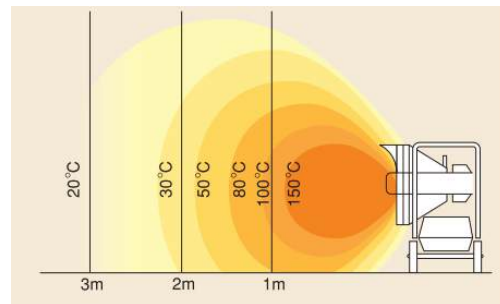


WATCH ME

For industrial use only. Must be used in well ventilated areas.

# RADIANT HEATING

A radiant heater is a type of heater that transfers heat directly to objects and people in the room, rather than heating the air first. This is done through the emission of infrared radiation, which is a form of heat energy that travels in waves.



# SPACE HEATING

Space heating (air heating) is the process of heating a building or other enclosed space to a comfortable temperature. We have a range of electric or fuel based space heaters which some require to be used in well-ventilated areas.

## What is the difference between direct fired & indirect fired heaters?

The main difference between direct fired and indirect fired heaters is how the heat is transferred to the air. In a direct fired heater, the flame is directly exposed to the air, which is then heated and circulated. In an indirect fired heater, the flame is enclosed in a combustion chamber which has a flue system positioned on the top to exhaust the fumes.

## How To Choose Your Heater

### Radiant Heating

KW	ELECTRIC	LPG	NATURAL GAS	DIESEL	INSTALL TYPE
2	CF2000 HIH200 SORRENTO-SINGLE2	-	-	-	PORTABLE OR WALL PORTABLE OR WALL WALL OR CEILING
4	SORRENTO-DOUBLE4 APOLLO-DOUBLE4	-	-	-	WALL OR CEILING WALL OR CEILING
4.44	-	GRH16LP GRHP16LP	GRHP16NG	-	PORTABLE WALL
6	SORRENTO-TRIPLE6 APOLLO-TRIPLE6	-	-	-	WALL OR CEILING WALL OR CEILING
7	-	GRH24LP GRHP24LP	-	-	WALL PORTABLE
14	-	GRH48LP GRHP48LP	GRH48NG	-	WALL PORTABLE
15	-	-	-	VAL6-DAYSTAR	PORTABLE
20	-	-	-	HDR20	PORTABLE
25	-	-	-	-	-
32.5	-	-	-	-	-
35	-	-	-	-	-
40	-	-	-	HDR40	PORTABLE
40.7	-	-	-	VAL6-EPX	PORTABLE
50	-	-	-	-	-

### Space Heating

KW	ELECTRIC	LPG	DIESEL DIRECT FIRED	DIESEL INDIRECT FIRED	AREA M <sup>2</sup>
2	IFH-2				5
2.4	HES2.4				12
3	IFH-3				15
5	IFH-5				25
9	IFH-9 PESH9 PHB3-9				45
15	IFH-15 PESH15 PHB3-15				75
20		IGH2-20	IDH3-20	IDH2-20IN	200
30	PESH30		IDH3-30		150 / 300
50			IDH3-50	IDH2-50IN	500

1 kW = 860 kcal/h  
 1 kW = 3.97 Btu/h  
 1 kW = 3412 Btu/h

Btu (British Thermal Unit) = measures heat energy  
 KW (Kilowatt) = measures power (energy per unit time)



What is the Difference Between Ventilation vs. Extraction?	40
What is Cross Flow Ventilation?	47
Confined Space Ventilation	47
What is an Air Scrubber Purifier?	51
What is Fume Extraction?	51



# VENTILATION/ EXTRACTION PRODUCTS


**39**

## WALL EXHAUST EXTRACTION FANS

Wall Exhaust Fans. Sizes from 200mm to 1000mm. Single & three phase


**42**

## AXIAL FLOW FANS

Axial Flow Fans. Sizes from 300mm to 1000mm. Single & three phase


**43**

## INLINE DUCT FANS

Centrifugal Roof Fans (Upblast/ Downblast) and Hooded Roof Fans


**45**

## ROOF FANS

Centrifugal Roof Fans (Upblast/ Downblast) and Hooded Roof Fans


**47**

## PORTABLE VENTILATORS/ EXHAUST BLOWERS/ PURGING FANS

Portable Ventilators & Exhaust Blowers. Sizes 150mm to 450mm. Single & three phase. Ducting available.


**50**

## AIR SCRUBBER PURIFIER

Air Scrubber Purifiers


**52**

## PORTABLE FUME COLLECTORS/ EXTRACTORS

Portable Fume Collectors/Extractors

# PRODUCTS BY APPLICATION



PRODUCTS BY APPLICATION	IWEL IWLF IW IGLF	AF	IDF	IHR	UPBLAST	DOWNBLAST
-------------------------	----------------------------	----	-----	-----	---------	-----------

## CONSTRUCTION

GENERAL VENTILATION						
EXTRACT FROM THE SOURCE						
CONFINED SPACES						
PORTABLE VENTILATION						
AIR FILTRATION						
FRESH AIR SUPPLY						

## WAREHOUSE, FACTORIES, WORKSHOPS & GARAGES

GENERAL VENTILATION	■	■	■	■	■	
EXTRACT FROM THE SOURCE						
EXTRACT DUST, FUMES & HOT AIR	■	■	■	■	■	
PORTABLE VENTILATION						
AIR FILTRATION						
DUCTING VENTILATION/INLINE SYSTEMS		■	■		■	
FRESH AIR SUPPLY		■				■

## AGRICULTURE

VENTILATION LIVESTOCK	■	■		■	■	
VENTILATION GREENHOUSES	■	■	■	■	■	
FRESH AIR SUPPLY		■	■			■

## HOSPITALITY & COMMERCIAL KITCHENS

GENERAL EXHAUST	■			■	■	
FRESH AIR SUPPLY		■	■			■

## RENTAL & EMERGENCY BREAKDOWN

AIR CIRCULATION						
EXTRACT DUST, FUMES & HOT AIR						
CONFINED SPACES						

# PRODUCTS BY APPLICATION



PRODUCTS BY APPLICATION	MPV CAB TAB	PF	PE	ASP	IPFC	IFA2
CONSTRUCTION						
GENERAL VENTILATION	■	■				
EXTRACT FROM THE SOURCE	■	■	■		■	■
CONFINED SPACES	■	■	■	■		
PORTABLE VENTILATION	■	■	■	■		
AIR FILTRATION				■	■	
FRESH AIR SUPPLY						
WAREHOUSE, FACTORIES, WORKSHOPS & GARAGES						
GENERAL VENTILATION	■	■				
EXTRACT FROM THE SOURCE	■	■	■		■	■
EXTRACT DUST, FUMES & HOT AIR	■	■	■	■	■	■
PORTABLE VENTILATION	■	■	■	■	■	
AIR FILTRATION				■	■	
DUCTING VENTILATION/INLINE SYSTEMS	■	■				
FRESH AIR SUPPLY	■	■				
AGRICULTURE						
VENTILATION LIVESTOCK	■	■				
VENTILATION GREENHOUSES	■	■				
FRESH AIR SUPPLY	■	■				
HOSPITALITY & COMMERCIAL KITCHENS						
GENERAL EXHAUST						
FRESH AIR SUPPLY						
RENTAL & EMERGENCY BREAKDOWN						
AIR CIRCULATION	■	■				
EXTRACT DUST, FUMES & HOT AIR	■	■	■	■	■	
CONFINED SPACES	■	■	■	■		



## Wall Exhaust Extraction

IWEL200, IWEL250,  
IWEL300, IWEL350,  
IWEL400



The Industrial Wall Exhaust Louvred Fans are designed to effectively extract stale air, fumes, and heat in industrial and commercial settings. With automatic aluminium louvres, these axial-style fans provide reliable wall-mounted ventilation for warehouses, workshops, factories, and storage facilities.

### Features:

- Extracts large volumes of air
- Easy to install
- Cost effective and efficient
- Self closing louvres stop reverse airflow
- Ready to be hard-wired in
- Plug not included
- 240V

### Applications:

- Warehouse, workshops & factories
- Garages
- Agriculture
- Horticulture

SPECIFICATIONS	UNIT	IWEL200	IWEL250	IWEL300	IWEL350	IWEL400
Air Flow	L/S	250	280	300	630	800
Noise Level	dBa	<45	<50	<58	<65	<67
Motor	W	45	45	45	75	145
Voltage		240	240	240	240	240
Current	A	0.12	0.12	0.19	0.31	0.60
Plug Connection		Hardwired	Hardwired	Hardwired	Hardwired	Hardwired
Fan Speed		1	1	1	1	1
Speed	RPM	1400	1400	1400	1400	1400
Diameter	mm	200	250	300	350	400

## Wall Exhaust Extraction

IWLF6-11-6, IWLF6-11-6-3



The Ouber Industrial Wall Exhaust Louvred Fan 600mm – 1.1kW is a powerful extraction solution designed for ventilating large commercial and industrial spaces. Delivering high airflow performance with durable construction, it effectively removes hot, stale air, fumes, and dust to improve air quality and workplace comfort.

### Features:

- Galvanised steel body
- Rain cover
- Internal gravity louvres
- Safety wire guards
- Supply or exhaust
- Used to exhaust heat, smoke, fumes, dust or provide ventilation

### Applications:

- Warehouse, workshops & factories
- Agriculture
- Horticulture

SPECIFICATIONS	UNIT	IWLF6-11-6	IWLF6-11-6-3
Air Flow	L/S	5000	5000
Noise Level	dBa	<70	<70
Motor	kW	1.1	1.1
Voltage		380	380
Controller		Phase Converter Input: 1PH 220V Output: 3PH 220V	-
Current	A	5	2.6
Plug Connection		Hardwired	Hardwired
Fan Speed		1	1
Speed	RPM	6P	6P
Insulation Class		F	F
IP Rating		IP44	IP44
Material of Blades		Nylon & Glass Fibre	Nylon & Glass Fibre
Material of Body		Galvanised Steel	Galvanised Steel
Material of Louvres		PVC	PVC
Measurements	mm	830(L)x430(D)x770(H)	830(L)x430(D)x770(H)
Weight	kg	38	38

## Wall Exhaust Extraction IGLF950, IGLF1250



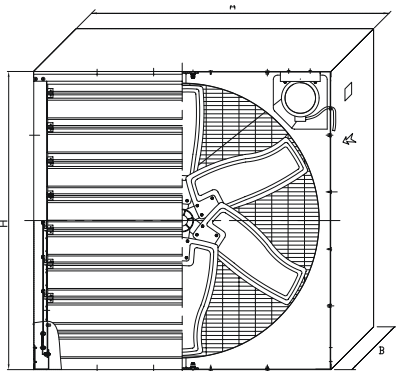
The Industrial Wall Exhaust Louvred Fans Galvanised (950mm & 1250mm) are belt-driven extraction units designed for high-volume airflow in commercial, industrial, and agricultural environments. Ideal for warehouses, factories, and workshops, they effectively remove hot, stale air, fumes, and airborne contaminants to improve air quality and workplace comfort.

**Features:**

- Built to last
- Extracts large volumes of air
- Easy to install
- Belt driven motor
- Quiet operation
- Louvres stop reverse air flow and weather when not on

**Applications:**

- Warehouse, workshops & factories
- Agriculture



Dimension AxBxH (mm)
1060x400x1060
1380x400x1380

	UNIT	IGLF950	IGLF1250
Air Flow	L/S	9000	12,500
Noise Level	dBa	<60	<65
Motor	W	750	1100
Voltage		415	415
Current	A	1.04	1.53
Plug Connection		Hardwired	Hardwired
Fan Speed		1	1
Speed	RPM	450	450
Weight	kg	55	85
Diameter	mm	950	1250
Pack Dimensions	mm	1060*400*1060	1380*400*1380

# WHAT IS THE DIFFERENCE BETWEEN EXTRACTION & VENTILATION?

Ventilation and extraction often go hand in hand, but they serve slightly different purposes in keeping your workplace safe and comfortable. Ventilation is about bringing in fresh air and circulating it throughout the space, helping control temperature, humidity, and overall air quality.

Extraction, on the other hand, focuses on removing unwanted air—such as fumes, dust, smoke, or heat—directly out of the environment. Together, they create a balanced system: ventilation supplies clean, fresh air, while extraction clears out contaminants, ensuring your workspace stays healthy, compliant, and energy efficient.



## Industrial Wall Exhaust

IW3, IW4, IW5, IW6,  
IW8, IW10



The Australian-made Industrial Wall Plate Exhaust Fans (IW Series) are engineered for powerful air extraction in demanding industrial and commercial environments. Built from heavy-duty powder-coated steel with a welded wall plate, they feature IP55-rated motors, durable glass-reinforced polypropylene blades, and safety guards for reliable, long-lasting operation.

### Features:

- Designed to exhaust or supply air
- Fitted with finger guards
- Powder coated steel casing
- IP55 motor standard (IP65 available)
- Fixed louvres available
- Made in Australia
- Suited for environments to remove heat, steam and dust
- Exe & Exd motors are available on sizes starting from 400mm

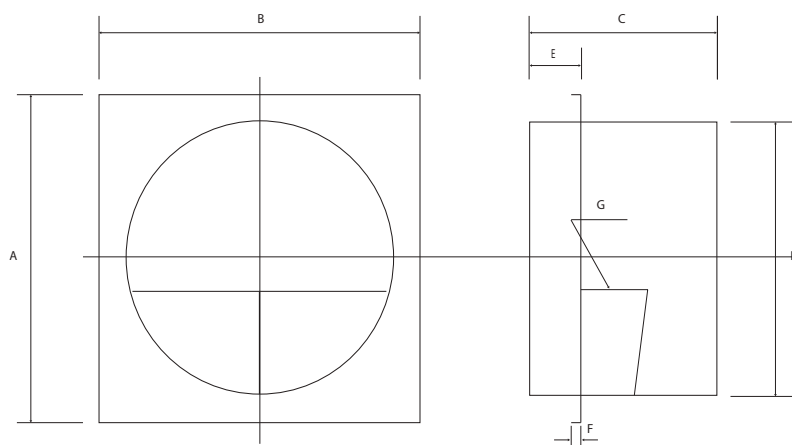
### Applications:

- Warehouse, workshops & factories
- Agriculture
- Construction sites
- Events & military
- Rental & emergency

PART #	DIAMETER	MOTOR	VOLTAGE	MOTOR	FAN SPEED	POLES	AIR FLOW
IW3-370-4	300mm	370W	240V	IP55	1	4	425 L/s
IW3-370-4-3	300mm	370W	415V	IP55	1	4	425 L/s
IW4-370-4	400mm	370W	240V	IP55	1	4	1000 L/s
IW4-370-4-3	400mm	370W	415V	IP55	1	4	1000 L/s
IW4-550-2	400mm	550W	240V	IP55	1	2	
IW4-550-2-3	400mm	550W	415V	IP55	1	2	
IW5-550-4	500mm	550W	240V	IP55	1	4	2550 L/s
IW5-550-4-3	500mm	550W	415V	IP55	1	4	2550 L/s
IW5-550-4-3E	500mm	550W	415V		1	4	2550 L/s
IW6-750-4	600mm	750W	240V	IP55	1	4	2950 L/s
IW6-750-4-3	600mm	750W	415V	IP55	1	4	2950 L/s
IW6-750-4-3E	600mm	750W	415V		1	4	2950 L/s
IW6-11-4	600mm	1100W	240V	IP55	1	4	4200 L/s
IW6-11-4-3	600mm	1100W	415V	IP55	1	4	4200 L/s
IW6-11-4-3E	600mm	1100W	415V		1	4	4200 L/s
IW6-15-4	600mm	1500W	240V	IP55	1	4	
IW6-15-4-3	600mm	1500W	415V	IP55	1	4	
IW6-15-4-3E	600mm	1500W	415V		1	4	
IW8-15-4	800mm	1500W	240V	IP55	1	4	6570 L/s
IW8-15-4-3	800mm	1500W	415V	IP55	1	4	6570 L/s
IW8-15-4-3E	800mm	1500W	415V		1	4	6570 L/s
IW10-22-8-3	1000mm	2200W	415V	IP55	1	8	12400L/s

### INDUSTRIAL WALL & MANCOOLER GUARDS

PART #	SIZE
IWG300	300mm
IWG400	400mm
IWG500	500mm
IWG600	600mm
IWG800	800mm
IWG1000	1000mm
IWG1200	1200mm



### NON-RETURN LOUVRES

PART #	SIZE
IWL400	400 x 400mm
IWL500	500 x 500mm
IWL600	600x 600mm
IWL800	800 x 800mm
IWL1000	1000 x 1000mm

DRUM Ø	BLADE Ø	A	B	C*	D	E	F	G*
300	280	400	400	400	300	100	25	-
400	380	500	500	400	400	100	25	-
500	480	600	600	400	500	100	25	-
600	580	700	700	400	600	100	25	-
800	780	900	900	400	800	100	25	-
1000	980	1100	1100	650	1000	100	25	-

\*C - Can vary due to the size of the motor

\*G - Motor plate varies due to motor size

## Axial Flow Fans

AF3, AF4, AF5, AF6, AF8, AF10



The Australian-made Axial Flow Fans (AF Series) are designed for industrial and commercial environments where high airflow and reliable ventilation are essential. Suitable for both ducted and non-ducted applications, they efficiently extract dust, fumes, smoke, steam, and heat, making them a versatile solution for a wide range of air movement and extraction needs.

### Features:

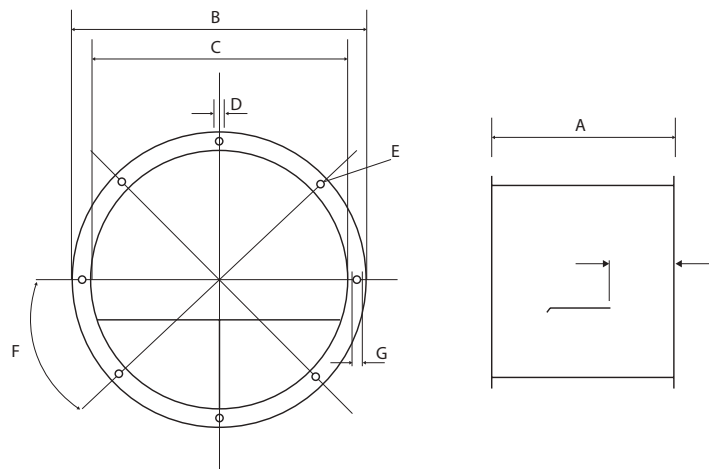
- Designed to remove heat, steam and dust
- Inline axial fan
- Built-in flanges designed to attach to ducting
- Powder coated rolled steel casing
- IP55 motor standard (IP65 available)
- Made in Australia
- Ex e & Ex d motors are available on sizes starting from 400mm
- Hard wired

### Applications:

- Warehouse, workshops & factories
- Agriculture
- Horticulture
- Paint shops



SPECIFICATIONS	DIAMETER	MOTOR	VOLTAGE	IP RATING	FAN SPEED	POLE	AIRFLOW
AF3-370-4	300mm	370W	240V	IP55	1	4	680 L/s
AF3-370-4-3	300mm	370W	415V	IP55	1	4	680 L/s
AF3-550-2	300mm	550W	240V	IP55	1	2	
AF3-550-2-3	300mm	550W	415V	IP55	1	2	
AF4-370-4	400mm	370W	240V	IP55	1	4	1500 L/s
AF4-370-4-3	400mm	370W	415V	IP55	1	4	1500 L/s
AF4-370-4-3E	400mm	370W	415V		1	4	1500 L/s
AF4-750-2	400mm	750W	240V	IP55	1	2	
AF4-750-2-3	400mm	750W	415V	IP55	1	2	
AF4-750-2-3E	400mm	750W	415V		1	2	
AF5-750-4	500mm	750W	240V	IP55	1	4	2700 L/s
AF5-750-4-3	500mm	750W	415V	IP55	1	4	2700 L/s
AF5-750-4-3E	500mm	750W	415V		1	2	2700 L/s
AF5-11-2	500mm	1100W	240V	IP55	1	2	
AF5-11-2-3	500mm	1100W	415V	IP55	1	2	
AF5-11-2-3E	500mm	1100W	415V		1	2	
AF6-11-4	600mm	1100W	240V	IP55	1	4	3800 L/s
AF6-11-4-3	600mm	1100W	415V	IP55	1	4	3800 L/s
AF6-11-4-3E	600mm	1100W	415V		1	4	3800 L/s
AF6-15-4	600mm	1500W	240V	IP55	1	4	4550 L/s
AF6-15-4-3	600mm	1500W	415V	IP55	1	4	4550 L/s
AF6-15-4-3E	600mm	1500W	415V		1	4	4550 L/s
AF8-15-4	800mm	1500W	240V	IP55	1	4	6000 L/s
AF8-15-4-3	800mm	1500W	415V	IP55	1	4	6000 L/s
AF8-15-4-3E	800mm	1500W	415V		1	4	6000 L/s
AF8-22-4	800mm	2200W	240V	IP55	1	4	8000 L/s
AF8-22-4-3	800mm	2200W	415V	IP55	1	4	8000 L/s
AF8-22-4-3E	800mm	2200W	415V		1	4	8000 L/s
AF10-55-6-3	1000mm	5500W	415V	IP55	1	6	12000 L/s



DRUM Ø	BLADE Ø	A	B	C	D Ø	E	F	G
300	290	400	360	300	8	8	-	25
400	380	400	500	400	8	8	-	25
500	480	500	600	500	11	8	-	25
600	580	500	700	600	11	8	-	25
800	780	500	900	800	11	12	-	25
1000	980	700	1100	1000	11	12	274	25



## Inline Duct Fans

IDF-100E, IDF-120E, IDF-150E, IDF-160E,  
IDF-200E, IDF-250E, IDF-310E



Inline Duct Fans deliver exceptional performance in a compact and durable design, making them suitable for residential, commercial, and industrial applications. Constructed from high-quality galvanised steel, the casing is built to withstand demanding environments and ensure long-lasting reliability.

### Features:

- High-efficiency EC motors  
Significantly reduced energy consumption compared to traditional AC motors
- Consistent airflow and pressure, even under varying load conditions
- Quiet operation for noise-sensitive environments
- Durable construction
- Galvanised steel casing for long-lasting performance
- Robust design to withstand harsh operating conditions
- Easy installation and maintenance
- Compact size for flexible installation options
- Simple design for effortless maintenance

### Applications:

- Residential: bathrooms, kitchens, laundries.
- Commercial: restaurants, hotels, offices.
- Industrial: workshops, warehouses, factories.

SPECIFICATION											
Model No	Duct Size	Voltage Frequency	VAC V	Power W	Current (A)	RPM	Airflow m <sup>3</sup> /h	Static Pressure Pa	Noise dBa	Maximum Efficiency Point Power W	Maximum Efficiency %
IDF-100E	100mm	230V 50Hz	10	39	0.35	2800	265	355	62	29.1	27.17
			8	25	0.24	2400	235	259	59	21.4	24.85
			6	12	0.14	1800	179	148	52	10.8	21.08
IDF-120E	120mm	230V 50Hz	10	40	0.35	2800	337	357	62	35.5	30.31
			8	24	0.23	2400	281	254	59	22.2	28.94
			6	12	0.14	1800	214	147	51	11.2	30.58
IDF-150E	150mm	230V 50Hz	10	42	0.37	2800	469	348	62	42.2	30.58
			8	28	0.25	2400	408	251	58	28.4	30.21
			6	14	0.15	1800	306	142	50	14.1	26.05
IDF-160E	160mm	230V 50Hz	10	42	0.37	2800	495	344	61	42.3	31.18
			8	26	0.25	2400	428	245	58	29.1	32.93
			6	14	0.14	1800	326	142	50	14.4	29.01
IDF-200E	200mm	230V 50Hz	10	112	0.89	2850	989	566	68	128.3	41.67
			8	66	0.55	2400	847	394	63	79.5	41.81
			6	30	0.26	1800	612	219	56	34.1	38.87
IDF-250E	250mm	230V 50Hz	10	118	0.93	2850	1071	581	68	128.4	44.12
			8	70	0.58	2400	887	411	64	84.9	43.63
			6	31	0.28	1800	653	226	57	53.3	40.52
IDF-310E	310mm	230V 50Hz	10	128	0.98	2750	1377	710	71	126.4	46.73
			8	82	0.67	2400	1173	497	68	125.7	45.56
			6	35	0.31	1800	887	273	60	53.3	44.63

Material: Impeller is made of PA66+25%GF & Scroll housing is made of SPCD

Bearing: Ball bearing

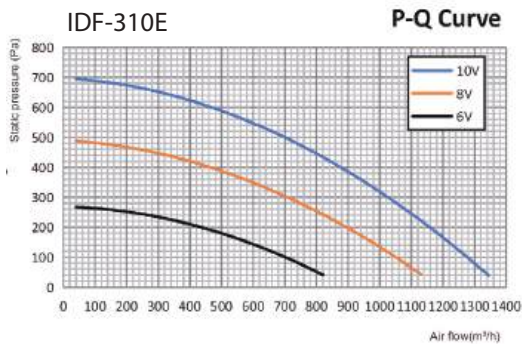
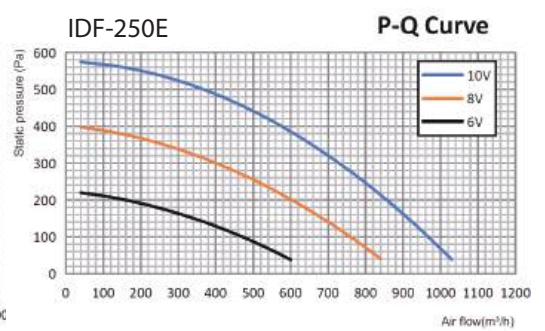
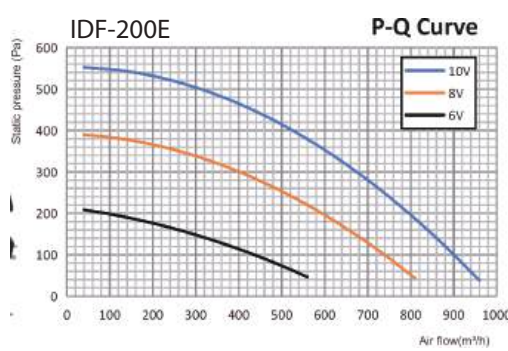
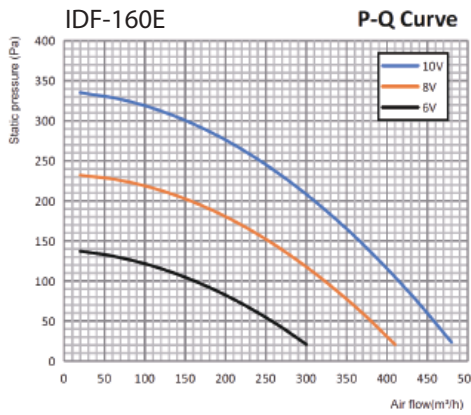
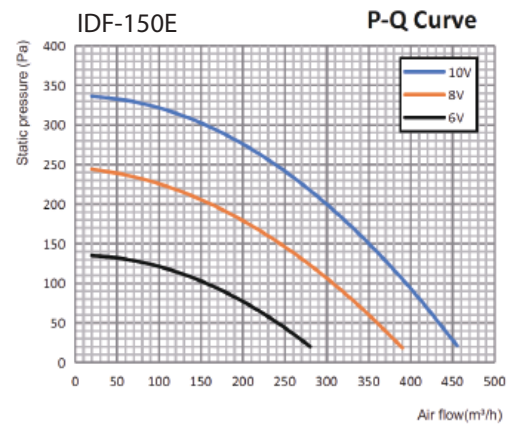
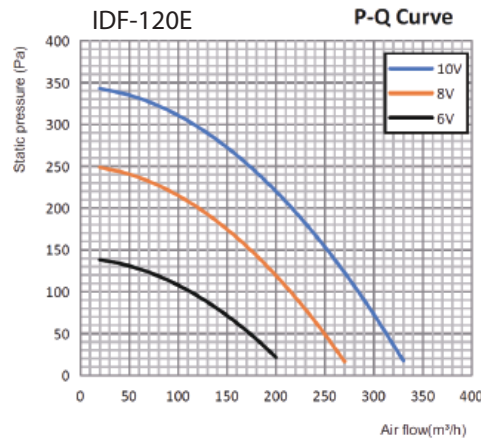
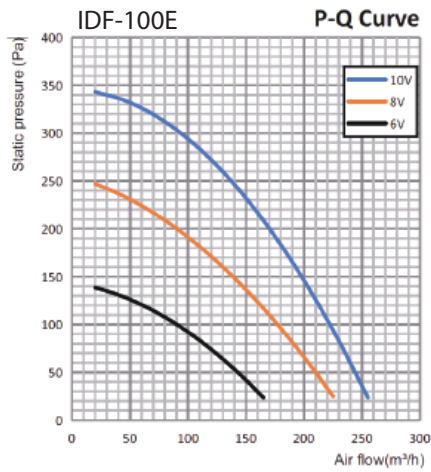
Type of protection: IP44

Operation Mode: S1

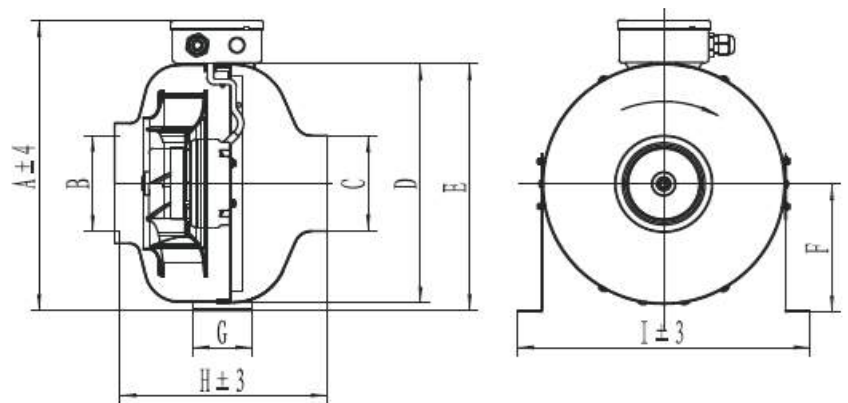
Motor insulation class: F

Direction of rotation: Anti-clockwise, see on the leads

Amb. Temp: -20~+60°C



## DIMENSIONS



Model No.	A	B	C	D	E	F	G	H	I
IDF-100E	297	98	98	243	251	130	60	219	293
IDF-120E	297	123	123	243	251	130	60	222	293
IDF-150E	350	148	148	276	304	166	60	232	326
IDF-160E	350	158	158	276	304	166	60	232	326
IDF-200E	397	198	198	332	351	185	125	259	392
IDF-250E	397	248	248	332	351	185	125	259	392

# Ventilation/Extraction

## Centrifugal Roof Fans UPBLAST

RFCD-200-120, RFCD-260-180,  
RFCD-320-250, RFCD-360-550,  
RFCD-500-22



The high-efficiency centrifugal roof exhaust fan features an upper exhaust design with a backward-curved aluminium impeller and circular arc venturi tube for smooth, balanced airflow that meets ISO 1940G2.5 standards. Built with robust aluminium alloy construction, galvanised steel supports, and a strategically positioned IP44-rated motor, it delivers durable, energy-efficient, and weather-resistant performance with integrated flashing, anti-bird grill protection, and long service life.

### Features:

- One-piece spinning fan cover: Robust and resistant to high wind loads
- Anti-corrosion galvanised steel plate: Provides durable support for the drive mechanism
- Stepped flashing: Prevents water seepage for reliable operation
- Galvanised bird-proof net: Protects the fan from obstructions and contaminants

### Applications:

- Industrial and mining plant roofs
- Civil buildings
- Shopping malls
- Other venues requiring efficient air extraction and exhaust

### SPECIFICATIONS

	UNIT	RFCD-200-120	RFCD-260-180	RFCD-320-250	RFCD-360-550	RFCD-500-22
Air Flow	m³/h	700/870	1204/1440	2007/2400	3386/4200	9423/10722
Size	mm	200	260	320	360	500
Motor	kW	0.12kW	0.18kW	0.25kW	0.55kW	2.2kW
Voltage		415V/50Hz	415V/50Hz	415V/50Hz	415V/50Hz	415V/50Hz
RPM		1380/1650	1380/1650	1380/1650	1380/1650	1450/1740

## Centrifugal Roof Fans DOWNBLAST

RFCU-280-370, RFCU-315-550,  
RFCU-400-11, RFCU-450-22, ,  
RFCU-500-3, RFCU-560-3,  
RFCU-630-22, RFCU-800-55



The high-performance belt-driven centrifugal downblast roof fan is designed for general clean air applications where downward discharge is required, making it ideal for industrial facilities, commercial buildings, and mining operations. Constructed with a durable spun aluminium housing, it offers exceptional resistance to corrosion and weathering, ensuring long-lasting performance in harsh outdoor environments.

### Features:

- Upper exhaust with backward aluminium impeller
- Smooth airflow via arc venturi tube
- ISO-balanced impeller (G2.5)
- Motor outside airflow, IP44 rated
- Aluminium casing, corrosion-resistant
- Integrated flashing and bird-proof grill

### Applications:

- Industrial and mining plant roofs
- Civil buildings
- Shopping malls
- Other venues requiring efficient air extraction and exhaust

### SPECIFICATIONS

Model No	Size mm	Motor kW	Voltage/Hz	RPM	Airflow		Static Pressure Pa	Airflow @ Zero Static Pressure		dBa	Weight kg
					m³/h	L/s		m³/h	L/s		
RFCU-280-370	280	0.37	415V/50Hz	1900	1984	551	277	2450	680	66	47
RFCU-315-550	315	0.55	415V/50Hz	1650	2454	681	264	2850	791	55	55
RFCU-400-11	400	1.1	415V/50Hz	1400	4263	1184	306	5300	1472		67
RFCU-450-22	450	2.2	415V/50Hz	1450	6286	1746	416	7600	2111		88
RFCU-500-3	500	3	415V/50Hz	1520	7735	2148	682	11,960	3322	78	95
RFCU-560-3	560	3	415V/50Hz	1250	8937	2482	579	12,642	3511		
RFCU-630-22	630	2.2	415V/50Hz	930	9467	2629	405	14,165	3934		
RFCU-800-55	800	5.5	415V/50Hz	860	17,926	4979	559	26,500	7361		

### Transmission Medium Requirements:

The fan is designed to handle air or other non-corrosive, non-flammable, and non-explosive gases. The transmission medium should not contain excessive dust or particles, as this may shorten the impeller's lifespan. The maximum allowable particle content is 150 mg/m³.

### Transmission Medium Temperature:

For standard structures, the transmission medium temperature should not exceed 80°C.



## Roof Fans

IHR4, IHR6, IHR8



The Fanmaster IHR Hooded Roof Fan is an industrial-grade axial exhaust fan designed for efficient general ventilation in commercial and industrial buildings. Available in 400mm, 600mm, and 800mm configurations, the IHR series effectively extracts hot, stale air and fumes from internal environments such as warehouses, factories, workshops, and commercial facilities.

### Features:

- Extracts heat, smoke, dust, or fumes from all types of buildings including factories and warehouses
- Used in conjunction with coolers to help lower temperatures during the hotter months
- Constructed from high quality steel and aluminium for a weatherproof design

### Applications:

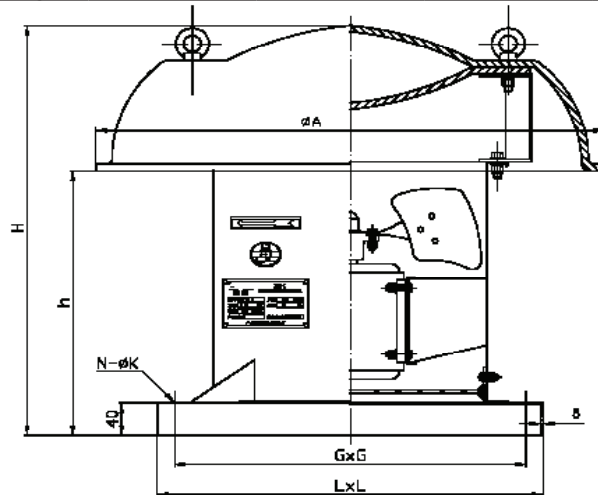
- Warehouse, workshops & factories
- Plants



WATCH ME



SPECIFICATIONS	UNIT	IHR4-550-4-3	IHR6-11-6-3	IHR6-22-4-3	IHR8-22-6-3
Air Flow	L/S	1111	3600	5200	7778
Noise Level	dBa	$\leq 72 \pm 5\text{dB(A)}$	$\leq 71 \pm 5\text{dB(A)}$	$\leq 75 \pm 5\text{dB(A)}$	$\leq 78 \pm 5\text{dB(A)}$
Motor	W	550	1100	2200	2200
Voltage	V	400~415	400~415	400~415	400~415
Pole		4	4	4	4
Plug Connection		Hard wired	Hard wired	Hard wired	Hard wired
Material Cap Body/Base		Aluminium Steel	Aluminium Steel	Aluminium Steel	Aluminium Steel
Weight	kg	26	105	110	125



PART #	ØA	H	h	LxL	GxG	N-ØK	
IHR4-550-4-3	Ø650	550	355	520X520	470X470	4-Ø10	3
IHR6-11-6-3	Ø1000	670	455	900X900	770X770	4-Ø14	3
IHR8-22-6-3	Ø1390	750	480	1100X1100	1000X1000	4-Ø14	5





# Ventilation/Extraction

## What is Cross Flow Ventilation?

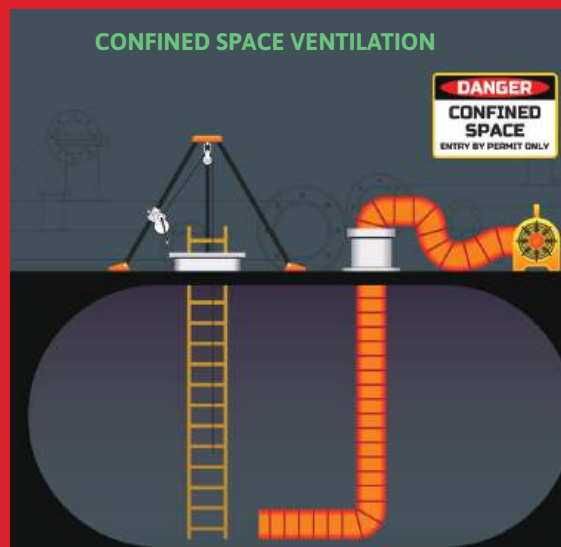
Cross flow ventilation is a natural ventilation strategy that uses the wind to move air through a building. It involves opening windows or doors on opposite sides of the building so that the air can blow through the space. This creates a current of air that helps to remove stale air and replace it with fresh air. A mechanical solution for this would be to add fans for a consistent air flow e.g. Roof Fans or Wall Exhaust Fans.

## What is Confined Space Ventilation?

Confined space ventilation is the process of removing stale air, hazardous gases, vapours, fumes and dusts from a confined space to create a safe atmosphere for workers to enter and work.

When extracting air from a confined space, clean air needs to come from somewhere. If no clean air is available to enter the confined space through a large drain or vent (natural ventilation), it is necessary to consider blowing fresh air in. Using fans (mechanical ventilation) by supplying fresh air into an area we still need to find clean air from somewhere and it may be as simple as placing the fan at some distance away or outside a building and ducting the air in.

Products such as the Compact Air Blaster, Purging Fan and Portable Exhaust Blowers are ideal for confined space ventilation.



## Portable Ventilators MPV300

**MASTERFANS**

**1 YEAR  
WARRANTY**

The Masterfan MPV300 Portable Ventilator comes in a 300mm diameter, and will exhaust or supply at a rate of up to 1083 L/S. It has a carry handle for ease of portability. Ducting is available in 5m Lengths and is sold separately.



### Features:

- Hi visibility orange colour
- Safety grills/guards on front and back
- Circular steel casing
- Non-slip rubber feet
- Heavy duty carrying handle
- Adaptable to flexible ducting

### Applications:

- Warehouse, workshops & factories
- Rental & emergency
- Confined spaces



SPECIFICATIONS	UNIT	MPV300
Air Flow	L/S	1083
Noise Level	dBa	<83
Motor	W	520
Voltage	V	240
Current	A	2.1
Plug Connection		3 Pin 10A
Fan Speed		1
Weight	kg	11
Diameter	mm	300



WATCH  
ME

## Portable Ventilators CAB200, CAB300, CAB450



The Fanmaster Compact Air Blasters are a premium range of portable ventilators designed to deliver powerful airflow in a lightweight, compact design, available in 200mm, 300mm, and 450mm sizes. Built with a durable metal casing and heavy-duty carry handle, the CAB series provides high airflow performance, quiet operation, and reliable service life, making them ideal for confined space ventilation and use in workshops, warehouses, factories, and construction sites.

### Features:

- Blows and extracts high volumes of air
- Flexible ducting to suit is also available
- High powered
- Robust design and built
- Portable and compact

### Applications:

- Warehouse, workshops & factories
- Agriculture
- Construction sites
- Events & military
- Rental & emergency



SPECIFICATIONS	UNIT	CAB200	CAB300	CAB450
Air Flow	L/S	416	1000	2083
Noise Level	dBa		<80	<96
Motor	W	150	500	1700
Voltage	V	240	240	240
Current	A	2.08		7.08
Plug Connection		3 Pin 10A	3 Pin 10A	3 Pin 10A
Fan Speed		1	1	1
Weight	kg	8.8	14	29
Diameter	mm	200	300	450

## Portable Ventilators TAB200, TAB300



The TAB Series Portable Ventilators by Fanmaster are lightweight yet robust units constructed from high-density polyethylene (HDPE) for impact resistance and long service life, making them ideal for temporary ventilation in commercial and industrial environments. Designed to be stackable for easy transport and storage, the range includes the TAB200 (200mm, 150W) and TAB300 (300mm, 750W), both supporting flexible ducting attachments (TAB200 with IFD200, TAB300 with IFD300).

### Features:

- High quality & compact design
- Tough high density polyethylene
- UV stabilised resin casing
- Multi-purpose blower
- Can be stacked on top of each other for use or storage

### Applications:

- Dust and fume extraction
- Confined spaces



SPECIFICATIONS	UNIT	TAB200	TAB300
Air Flow	L/S	377	898
Noise Level	dBa	<65	<65
Motor	W	150	750
Voltage	V	240	240
Current	A	0.63	3.13
Plug Connection		3 Pin 10A	3 Pin 10A
Fan Speed		1	1
Weight	kg	8.8	15
Diameter	mm	200	300
Pack Dimensions	mm	340*270*390	459*385*520

## Purging Fans

PF3, PF4



Fanmaster's Industrial Purging Fans are Australian-made axial fans designed to remove fumes, vapours, and airborne contaminants from enclosed or confined industrial environments. Engineered for high airflow and reliability, they are ideal for tank purging, confined space ventilation, and decontamination operations in demanding workplaces.

### Features:

- Robustly built
- Can be used for both exhaust or supply air
- Remove large volumes of fumes or toxic air
- Powder coated rolled steel casing
- Fitted with finger guards
- Comes with pick up hood and handle
- Comes complete with 5 metres of heavy duty duct
- IP55 motor standard (IP65 available)
- Exe & Exd motors only available for PF4
- Made in Australia

### Applications:

- Warehouse, workshops & factories
- Agriculture
- Construction sites
- Events & military
- Rental & emergency
- Confined spaces

SPECIFICATIONS	UNIT	PF3-11-2	PF3-11-2-3	PF4-15-2	PF4-22-2-3	PF4-22-2-3E
Air Flow	L/S	1200	1200	2200	2500	2500
Noise Level	dBa	<78	<78	<78	<78	<78
Motor	W	550	550	1500	2200	2200
Voltage	V	240	415	240	415	415
Current	A					
Plug Connection		3 Pin 10A	4 Pin 10A	3 Pin 10A	3 Pin 10A	3 Pin 10A
Fan Speed		1	1	1	1	1
Weight	kg					
Diameter	mm	300	300	400	400	400
Pack Dimensions	mm					
Motor Protection	IP	IP55	IP55	IP55	IP55	Ex e II T3 IP55
Ducting		300mm*5m	300mm*5m	400mm*5m	400mm*5m	400mm*5m

## Portable Exhaust Blower PE160, PE250



The Fanmaster Portable Exhaust Blower is a compact, industrial-grade air mover designed for confined space ventilation and fume extraction. Manufactured in Australia with a centrifugal fan type, it delivers high-pressure airflow through the included flexible ducting for effective and reliable ventilation.

### Features:

- Robustly built
- Can be used for both exhaust or supply air
- Heavy duty frame with handle
- Powder coated steel casing
- Fitted with finger guards
- Comes with pick up hood and handle
- Comes complete with 5 metres of heavy duty duct
- Centrifugal fan
- IP55 motor standard (IP65 available)
- Exe & Exd motors available
- Made in Australia

### Applications:

- Warehouse, workshops & factories
- Agriculture
- Construction sites
- Events & military
- Rental & emergency

SPECIFICATIONS	UNIT	PE160-2	PE-160-2-3	PE160-2-3E	PE250-2	PE250-2-3	PE250-2-3E
Air Flow	L/S	440	440	440	1310	1310	1310
Noise Level	dBa	<78	<78	<78	<78	<78	
Motor	W	750	750	750	1500	1500	1500
Voltage	V	240	415	415	240	415	415
Current	A	3.13		1.04	6.25	2.08	1.5
Plug Connection		3 Pin 10A	4 Pin 10A	4 Pin 10A	3 Pin 10A	4 Pin 10A	4 Pin 10A
Fan Speed		1	1	1	1	1	1

## Air Scrubber Purifier ASP-500-M2



The ASP-500-MF2 MasterFilter by Fanmaster is an industrial Air Scrubber Purifier that removes 99.97% of airborne particles, dust, and contaminants such as mould spores, germs, and viruses through a 2-stage filtration process with UV-C sterilisation. It includes a HEPA filter replacement indicator, can be multi-stacked horizontally for storage, and allows for 200mm ducting attachment.

### Features:

- 2 Stage filtration (Pre-Filter & H13 HEPA Filter)
- UV-C sterilisation light
- Variable speed
- Hour timer
- Cord wrap
- Carry handles & protective corners

### Applications:

- Construction sites
- Offices
- Commercial - hotels, kitchens
- Warehouses, workshops & factories
- Rental/hire

SPECIFICATIONS	UNIT	ASP-500-M2
Air Flow	L/S CFM	241 511
Noise Level	dBa	78
Motor	W	210
Voltage		230
Current	A	0.87
Plug Connection		3 Pin 10A
Speeds		Variable
Filtered Area	m <sup>2</sup>	40
Filters		1st Stage: G4Pleated Disposable Cardboard Filter 2nd Stage: H13 HEPA Filter UV-C Light Sterilisation
Weight	kg	15.5
Dimensions	mm	438*328*412
Pack Dimensions	mm	505*390*465



WATCH ME

## Air Scrubber Purifier ASP-500-M3



The ASP-500-M3 MasterFilter by Fanmaster is an industrial-grade Air Scrubber Purifier that removes 99.97% of airborne particles, dust, odours, and contaminants such as mould spores, germs, and viruses through a 3-stage filtration process with UV-C sterilisation. It features a HEPA filter replacement indicator, can be positioned vertically or horizontally, stacked for storage, and allows for 200mm ducting attachment.

### Features:

- 3 Stage filtration (Pre-Filter, Activated Carbon & H13 HEPA Filter)
- UV-C sterilisation light
- Variable speed
- Hour timer
- Cord wrap
- Carry handle

### Applications:

- Construction sites
- Offices
- Commercial - hotels, kitchens
- Warehouses, workshops, & Factories
- Rental/hire

SPECIFICATIONS	UNIT	ASP-500-M3
Air Flow	L/S CFM	238 500
Noise Level	dBa	65
Motor	W	180
Voltage		230
Current	A	0.80
Plug Connection		3 Pin 15A
Speeds		Variable
Filtered Area	m <sup>2</sup>	up to 100
Filters		1st Stage: G4 Pleated Disposable Cardboard Filter 2nd Stage: G4 Activated Carbon Filter 3rd Stage: H13 HEPA Filter UV-C Light Sterilisation
Weight	kg	16.5 / 18.5
Dimensions	mm	620*410*645
Pack Dimensions	mm	635*415*670



WATCH ME



## What is an Air Scrubber Purifier?

---

An air scrubber purifier is a device designed to remove airborne particles, odours, and contaminants from both the air and surrounding surfaces. It draws in contaminated air through an inlet, which then passes through a multi-stage filtration process and is sterilised using UV-C light. The purified air is then released back into the environment through the outlet, leaving the space cleaner and healthier.

## What is Fume Extraction?

---

Fume extraction is the process of removing harmful fumes and particulates from the air in a workspace. It is used in a variety of industries, including welding, painting, woodworking, and manufacturing.

Fume extractors typically consist of a fan, a filter, and a ductwork system. The fan pulls the fumes and particulates into the filter, where they are trapped. The filtered air is then released back into the workspace.

Portable Fume Extractors are a portable solution and are ideal for extracting the fumes direct from the source.

Installed/Stationary Fume Extractors are permanently installed in a workspace and are ideal for general extraction of the area and are designed to extract larger volumes of air.



## Portable Fume Extractors

IPFC-075, IPFC-15,  
IPFC-30



### Features:

- Suitable for purifying fumes and dust that is generated in all kinds of welding, grinding and other areas
- HEPA's filtration efficiency can capture 99.8% of particles 0.3 microns or larger
- Comes in 2m & 3m flexible suction arms that can be rotated 360°
- Made of high temperature resistant, flame retardant and wearable composite material
- Includes two directional and two rotary polyurethane casters with braking device for easy moving and stationing
- An air compressor can be connected to assist with the manual cleaning process

### Applications:

- Welding
- Grinding
- Metalwork



WATCH  
ME



WATCH  
ME



WATCH  
ME

SPECIFICATIONS	UNIT	IPFC-075	IPFC-15	IPFC-30
Air Flow	L/S CFM	556	833	1111
Noise Level	dBa	<75	<75	<75
Motor	W	750	1.5	3.0
Voltage		240	415	415
Current	A	3.13	6.25	12.50
Plug Connection		3 Pin 10A	4 Pin 10A	4 Pin 20A
Filtering Area	m <sup>2</sup>	8	10	20
Max Pressure	Pa	1900	2800	2800
Compressed Air	MPa	0.5 ~ 0.6	0.5 ~ 0.6	0.5 ~ 0.6
Filter Type		HEPA	HEPA	HEPA
Filter QTY		1	1	2
Filtration Efficiency		> 99.8%	> 99.8%	> 99.8%
Filtering Material		Nanofibre	PTFE Membrane	PTFE Membrane
Fume Arm	m / mm	2 / 160	3 / 160	3 / 160
Dimensions	mm	510*610*900	700*800*1600	800*800*1633
Packaging	mm	620*740*1220	1000*820*1820	1000*1110*1900
Weight	kg	98 + 5	210 + 5	266 + 10

## Fume Arm

IFA2-160-2, IFA2-160-3



The Industrial Fume Arm is a versatile and powerful extraction system designed specifically for industrial applications. It effectively captures fumes, smoke, and dust generated during various processes, including welding, soldering, grinding, and chemical handling. This durable arm integrates seamlessly into both single-user workstations with individual fans and multi-user setups with central extraction systems.

### Features:

- 2m flexible arm
- Easy & silent operation
- Robust design
- Fume arm and suction tube made from flame-retardant material

### Applications:

- Welding fume extraction
- Soldering fume extraction
- Dust extraction



SPECIFICATION	IFA2-160-2	IFA2-160-3
Power (kW)	1.5	1.5
Voltage (V)	415 ~/50Hz	415 ~/50Hz
Connection	*Hardwired	*Hardwired
Fan Type	Centrifugal fan	Centrifugal fan
Airflow (L/s)	416±28	416±28
Full wind pressure (Pa)	1800	1800
Switch box	Circuit breaker, plug and wire	Circuit breaker, plug and wire
Suction arm	160mm, 2m length, PP hood	160mm, 3m length, PP hood
Installation bracket	280x330x503mm	280x330x503mm
Noise Level	≤74±5	≤74±5
Weight (kg) including suction arm	43±2	43±2
Dimensions (mm)	910×720×400mm	910×720×400mm

How do Dehumidifiers Work?	56
What is a Carpet Dryer?	56
What are the Benefits of Using a Carpet Dryer?	56



# DRYING



**55**

## DEHUMIDIFIERS

Industrial Dehumidifiers. Available in 120L and 180L high-capacity models.



**55**

## CARPET DRYER

Industrial Carpet Dryer. 3-speed motor, 3 drying positions, fully stackable.



# Drying

## Dehumidifiers

IPD-120, IPD-180



The IPD Industrial Dehumidifiers are high-capacity units designed for water damage, mould, and humidity control in commercial and industrial settings. Available in 120L and 180L models, they draw in moisture from the front and release dry air from the top. Built with a durable steel casing and dust filter, they ensure reliable, long-lasting performance. Improves air quality by removing dust, pollen, and other allergens.

### Features:

- Digital controller
- Timer function
- Built-in high capacity automatic drainage pump
- Portable on wheels
- Self-diagnostic function
- Automatic restart

### Applications:

- Agriculture
- Commercial - hotels, kitchens
- Warehouses
- Workshops
- Factories

SPECIFICATIONS	UNIT	IPD-120	IPD-180
Capacity		120L/Day 5L/Hr 30°C RH80%	180L/Day 7.5L/Hr 30°C RH80%
Airflow	L/s	390	
Area	m <sup>2</sup>	260 (Based on 3m Height. Operating temp 15°C – 35°C, RH 70~ 80%)	400 (Based on 3m Height. Operating temp 15°C – 35°C, RH 70~ 80%)
Voltage	V	240	240
Current	4.42		8.5
Power	W	920	1900
Power Consumption	kW	1	1.9
Current	A	4.42	8.5
Plug Connection		3 Pin 10A	3 Pin 10A
Refrigerant		R-410A	R-410A
Weight	kg	64	88
Measurement	mm	551*607*839	515*660*1025

## Carpet Dryer

ICD-520



The Fanmaster ICD-520 Industrial Carpet Dryer features a 520W sealed motor with 3 speeds and 3 drying positions. Fully stackable and lightweight with a carry handle, it's ideal for carpet, floors, inflatables, and water restoration. Made from durable polypropylene, it includes a 5m cord with wrap and a motor thermal overload for added protection.

### Features:

- Robust construction
- 3 speed settings
- 3 directional positions
- Lightweight with carry handle
- 5m long cable with cord wrap

### Applications:

- Drying carpet & floors
- Janitorial needs
- Air moving
- Inflatables



SPECIFICATIONS	UNIT	ICD-520
Fan Diameter	mm	411*237
Fan Type		Centrifugal
Power	W	520
Voltage		220~240V / 50 Hz
Plug Connection		3 Pin 10A
Current	A	2.0 / 2.8 / 3.2
Speed	RPM	1200 / 1300 / 1400
Insulation Class		F
Safety Cut-off Switch		Yes
Manual Reset		Yes
Material		High Density Polypropylene
IP Rating		IP22
Airflow	L/S	583 / 639 / 694
Noise Level	dBa	62 / 70 / 75
Measurement	mm	460*420*465
Weight	kg	13.5
Settings		3 Speed
Cable Length	m	5



# Dehumidifiers Carpet Dryers

and their benefits.

## How do Dehumidifiers Work?

A refrigerative dehumidifier works by drawing air into the unit, passing it over a cold coil, and then releasing the dry air back into the room. The cold coil cools the air, causing the moisture in the air to condense and collect on the coil. The condensed moisture is then drained into a reservoir. The amount of moisture that a dehumidifier can remove depends on its size and capacity.

Reduces humidity, which can help prevent mold and mildew growth.  
Improves air quality by removing dust, pollen, and other allergens.



## What is a Carpet Dryer?

A carpet dryer is a machine that uses air to dry carpets. It is typically used after a carpet has been cleaned, to help it dry faster and prevent mould and mildew growth. Carpet dryers can be used in remediation and restoration projects to help dry carpets that have been wet by flooding, water damage, or other accidents.

Carpet dryers are typically used in conjunction with other drying methods, such as dehumidifiers and air movers. This helps to ensure that the carpet is dried evenly and thoroughly.



## What are the Benefits of Using a Carpet Dryer?

- Dries carpets quickly and efficiently.
- Prevents mould and mildew growth.
- It can help to preserve the carpet.
- It can be used in conjunction with other drying methods.
- Reduces humidity, which can help prevent mold and mildew growth.
- Improves air quality by removing dust, pollen, and other allergens.







**59** DUCTING/JOINING RINGS



**60** HEAT SHIELDING MAT



**60** FUME COLLECTOR FILTERS

**SPARE  
PARTS**



**61** SPARE PARTS LIST



## Accessories/Spare Parts

### Flexible Ducting

IFD



This high quality ducting is specifically made and designed for portable ventilators. The ducting is comprised of fire retardant materials and designed for the most rugged environments and circumstances. The ducting concertinas for easy compact storage and is available in 5m lengths. Joining kits are also available in order to extend ducting.

SPECIFICATIONS	IFD200	IFD300	IFD450
Diameter (mm)	200	300	450
Length (m)	5	5	5

### Clear PU Flexible Ducting

PVCC



The Fanmaster PVCC152 is a high quality Polyurethane (PU) ducting made in Germany. It is a light and extremely flexible hose with good tensile and abrasion strengths and ultimate elongation. Free of softeners, halogen and cadmium free, ECO friendly. The wall is made of abrasion resistant Ester Polyurethane (microbes and hydrolysis resistant). The wall thickness between the spirals is ca 0.4mm copper plated spring steel spiral embedded into the wall. The Fanmaster PVCC range is a universal ducting/hose for woodworking, plastic and chemical industry for transportation of light solids and for air and gas transportation. Sold in 5 or 10m lengths.

SPECIFICATIONS	PVCC152	PVCC203	PVCC305	PVCC400
I.D. Ø (mm)	152	203	305	400
O.D. Ø (mm)	157	209	-	-
Wall Thickness (mm)	0.4	0.4	0.4	0.4
r (mind.) (mm)	152	305	305	400
Weight ca (kg/m)	0.675	0.946	-	-
Vacuum (mbar)	75	50	-	-
Pressure (bar)	0.25	0.15	-	-
Temperature Range	-40°C to +90°C			
Length (m)	5 or 10			

### Clamp & Join Ring Kit

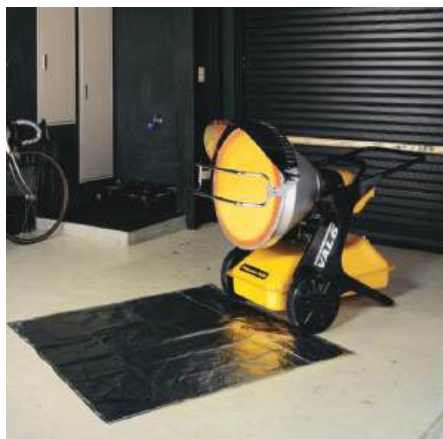
IJK



Used for linking pieces of duct, the IJK ranges are fabricated on site in our workshop to specification.

SPECIFICATIONS	IJK203	IJK305	IJK400	IJK450
Suited For	PVCC203 / IFD200	PVCC305 / IFD300	PVC400	IFD450
Diameter	203mm	305mm	400mm	450mm

### Heat Shielding Mat SP-VAL6-HSM



Heat Shielding Mat to suit VAL6 range and HDR. Designed to be positioned on the floor in front of the heater to protect the floor and prevent fire or damage to combustible floor surfaces. Made from Glass cloth and aluminum film. 1200x1200x4mm



### Filters - Fume Extractors FILTERS TO SUIT IPFC



Nanofibre Filter SP-IPFC-JS00 (Suits IPFC-075)  
PTFE Membrane SP-IPFC-KS01 (Suits IPFC-15 & IPFC-30)

### PVC Dust/Rain Covers COVER TO SUIT PAC UNITS



SP-PAC125-COVER Cover Dust/Rain PVC 580x1050mm

SP-PAC280-COVER Cover Dust/Rain PVC 910x1383mm

SP-PACIMD-COVER Cover Dust/Rain PVC 1080x1750mm

SP-PACISD-COVER Cover Dust/Rain PVC 1080x2000mm

# Accessories/Spare Parts

PART #	DESCRIPTION
SP-IDH3-FN1	FUEL NOZZLE TO SUIT IDH3-20
SP-IDH3-FN2	FUEL NOZZLE TO SUIT IDH3-30
SP-IDH3-FN3	FUEL NOZZLE TO SUIT IDH3-50
SP-IDH3-FF1	FUEL FILTER WITH O RING TO SUIT IDH3-20
SP-IDH3-FF2	FUEL FILTER WITH O RING TO SUIT IDH3-30 & IDH3-50
SP-IDH3-FFT	FUEL FILTER INLET TANK TO SUIT ALL IDH3
SP-IDH3-FL	FUEL LINE TO SUIT ALL IDH3
SP-IDH3-FB1	FAN BLADE TO SUIT IDH3-20
SP-IDH3-FB2	FAN BLADE TO SUIT IDH3-30 & IDH3-50
SP-IDH3-FM1	FAN MOTOR TO SUIT IDH3-20 & IDH3-30
SP-IDH3-FM2	FAN MOTOR TO SUIT IDH3-50
SP-IDH3-PC1	PHOTOCELL TO SUIT IDH3-20 & IDH3-30
SP-IDH3-PC2	PHOTOCELL TO SUIT IDH3-50
SP-IDH3-CB1	CIRCUIT BOARD (pcb Board) TO SUIT IDH3-20 & IDH3-30
SP-IDH3-CB2	CIRCUIT BOARD (pcb Board) TO SUIT IDH3-50
SP-IDH3-TR1	THERMOSTAT RESET BUTTON TO SUIT IDH3-20 & IDH3-30
SP-IDH3-TR2	THERMOSTAT RESET BUTTON TO SUIT IDH3-50
SP-IDH3-IGN	IGNITION NEEDLES TO SUIT ALL IDH3
SP-IDH3-IGT	IGNITION TRANSFORMER TO SUIT ALL IDH3
SP-IDH3-PUMP1	PUMP ASSEMBLY INC PUMP CORE BODY TO SUIT IDH3-20 + IDH3-30
SP-IDH3-PUMP2	PUMP ASSEMBLY INC PUMP CORE BODY TO SUIT IDH3-50
SP-IDH3-PUMPC1	PUMP CORE BODY + BLADES TO SUIT IDH3-20 + IDH3-30
SP-IDH3-PUMPC2	PUMP CORE BODY + BLADES TO SUIT IDH3-50
SP-IDH3-PF	PUMP FILTER TO SUIT ALL IDH3
SP-HDR20-FN	FUEL NOZZLE TO SUIT HDR20
SP-HDR40-FN	FUEL NOZZLE TO SUIT HDR40
SP-HDR-FP	FUEL PUMP TO SUIT HDR20 + HDR40
SP-HDR20-FF	FUEL FILTER TO SUIT HDR20
SP-HDR40-FF	FUEL FILTER WITH BOWL TO SUIT HDR40
SP-HDR20-CB	CIRCUIT BOARD TO SUIT HDR20 (PCB)
SP-HDR40-CB	CIRCUIT BOARD TO SUIT HDR40 (PCB)
SP-HDR-FFT	FUEL FILTER TANK TO SUIT HDR20 & HDR40
SP-HDR20-PC	PHOTOCELL TO SUIT HDR20
SP-HDR40-PC	PHOTOCELL TO SUIT HDR40
SP-HDR-IGN	IGNITION NEEDLES TO SUIT ALL HDR
SP-IFH-SWITCH	ON/OFF SWITCH TO SUIT IFH2/3
SP-IFH-SWITCH-2	ON/OFF SWITCH TO SUIT IFH5/9
SP-IFH-SWITCH-3	ON/OFF SWITCH TO SUIT IFH15
SP-IFH-OT	OVERTEMP CUTOUT SUIT IFH2/3
SP-IFH-OT-2	OVERTEMP CUTOUT SUIT IFH5/9/15
SP-IFH2-AT	ADJUST THERMOSTAT TO SUIT IFH2
SP-IFH3-AT	ADJUST THERMOSTAT TO SUIT IFH3
SP-IFH5-AT	ADJUST THERMOSTAT TO SUIT IFH5
SP-IFH9-AT	ADJUST THERMOSTAT TO SUIT IFH9
SP-IFH15-AT	ADJUS THERMOSTAT TO SUIT IFH15
SP-IFH2-ELEMENT	ELEMENT TO SUIT IFH2
SP-IFH3-ELEMENT	ELEMENT TO SUIT IFH3
SP-IFH5-ELEMENT	ELEMENT TO SUIT IFH5
SP-IFH9-ELEMENT	ELEMENT TO SUIT IFH9
SP-IFH15-ELEMENT	ELEMENT TO SUIT IFH15
SP-PESH9-AT	THERMOSTAT ADJUSTABLE TO SUIT PESH9
SP-PESH15-AT	THERMOSTAT ADJUSTABLE TO SUIT PESH15
SP-PESH30-AT	THERMOSTAT ADJUSTABLE TO SUIT PESH30
SP-PESH9-SW	SWITCH SELECTOR TO SUIT PESH9
SP-PESH15-SW	SWITCH SELECTOR TO SUIT PESH15
SP-PESH30-SW	SWITCH SELECTOR TO SUIT PESH30
SP-PESH-OT	THERMOSTAT OVERTEMP CUTOUT TO SUIT ALL PESH
SP-PESH30-OT2	THERMOSTAT (2ND) PESH30
SP-PESH9-ATK	THERMOSTAT ADJUSTABLE KNOB TO SUIT PESH9
SP-PESH15-ATK	THERMOSTAT ADJUSTABLE KNOB TO SUIT PESH15
SP-PESH30-ATK	THERMOSTAT ADJUSTABLE KNOB TO SUIT PESH30
SP-PESH9-SWK	SWITCH SELECTOR KNOB TO SUIT PESH9
SP-PESH15-SWK	SWITCH SELECTOR KNOB TO SUIT PESH15
SP-PESH30-SWK	SWITCH SELECTOR KNOB TO SUIT PESH30
SP-PESH9-ELEMENT	ELEMENT TO SUIT PESH9
SP-PESH15-ELEMENT	ELEMENT TO SUIT PESH15
SP-PESH30-ELEMENT	ELEMENT TO SUIT PESH30
SP-VAL6-DAYSTAR-FN	FUEL NOZZLE TO SUIT DAYSTAR (0.4G/80"H)
SP-VAL6-KBEIS-FN	FUEL NOZZLE TO SUIT KBEIS (0.85G/60"H)
SP-VAL6-EPX-FN	FUEL NOZZLE TO SUIT EPX
SP-VAL6-DAYSTAR-FF	FUEL FILTER TO SUIT DAYSTAR
SP-VAL6-KBEIS-FF	FUEL FILTER TO SUIT KBEIS
SP-VAL6-EPX-FF	FUEL FILTER TO SUIT EPX

PART #	DESCRIPTION
SP-VAL6-DAYSTAR-FP	FUEL PUMP TO SUIT DAYSTAR
SP-VAL6-KBEIS-FP	FUEL PUMP TO SUIT KBEIS
SP-VAL6-EPX-FP	FUEL PUMP TO SUIT EPX1
SP-VAL6-HSM	HEAT SHIELDING MAT
SP-KBEIS-RD	RADIATION DISK TO SUIT KBEIS
SP-DAYSTAR-RD	RADIATION DISK TO SUIT DAYSTAR
SP-EPX-RD	RADIATION DISK TO SUIT EPX
SP-DAYSTAR-CB2	CIRCUIT BOARD TO SUIT DAYSTAR (FROM 2012 D-01)
SP-DAYSTAR-CB1	CIRCUIT BOARD TO SUIT DAYSTAR (2005 TO 2011 N-01 TO E-01)
SP-KBEIS-CB	CIRCUIT BOARD TO SUIT KBEIS
SP-EPX-CB	CIRCUIT BOARD TO SUIT EPX
SP-DAYSTAR-CC	COMBUSTION CHAMBER PACKAGING TO SUIT DAYSTAR
SP-DAYSTAR-TOS	TIP OVER SWITCH TO SUIT DAYSTAR
SP-DAYSTAR-BC	BURNER CONTROL TO SUIT DAYSTAR
SP-KBEIS-BC	BURNER CONTROL TO SUIT KBEIS
SP-KBEIS-CI	CONICAL INSULATOR TO SUIT KBEIS
SP-KBEIS-AV	AIR VENT VALVE TO SUIT KBEIS
SP-KBEIS-RL	RETURN LINE TO SUIT KBEIS
SP-KBEIS-RLN	RETURN LINE NIPPLE TO SUIT KBEIS
SP-KBEIS-SC	SHORT CIRCUIT CORD TO SUIT KBEIS
SP-KBEIS-COVER	BURNER COVER TO SUIT KBEIS
SP-KBEIS-RS	REPAIR SET TO SUIT KBEIS
SP-KBEIS-FUSE	FUSE TO SUIT KBEIS
SP-KBEIS-TC	TANK CAP TO SUIT KBEIS
SP-KBEIS-DP	DRAIN PACKING TO SUIT KBEIS
SP-KBEIS-DB	DRAIN BOLT TO SUIT KBEIS
SP-KBEIS-KB	KNOB BOLT TO SUIT KBEIS
SP-KBEIS-GASKET	GASKET TO SUIT KBEIS
SP-KBEIS-ST	STEPDOWN TRANSFORMER TO SUIT KBEIS
SP-DAYSTAR-FM	FLAME MONITOR WITH HOLDER TO SUIT DAYSTAR
SP-DAYSTAR-TCP	THERMOSTAT CONNECTOR WITH PIN TO SUIT DAYSTAR
SP-IGH2-TC	THERMO COUPLE TO SUIT IGH2-20
SP-IGH2-GCV	SAFETY GAS CONTROL VALVE TO SUIT IGH2-20
SP-IGH2-HR	HOSE + REGULATOR TO SUIT IGH2-20
SP-PERH-ELEMENT	ELEMENT TO SUIT PER2400
SP-ICH-ELEMENT	ELEMENT SUIT QUARTZ RADIANT
SP-IPAC-47-CB	CIRCUIT BOARD TO SUIT IPAC-47
SP-IPAC-47-CF	COND FILTER TO SUIT IPAC-47
SP-IPAC-47-EF	EVAP FILTER TO SUIT IPAC-47
SP-IPAC-61-CB	CIRCUIT BOARD TO SUIT IPAC-61
SP-IPAC-61-CF	COND FILTER TO SUIT IPAC-61
SP-IPAC-61-EF	EVAP FILTER TO SUIT IPAC-61
SP-IPAC-94-CB	CIRCUIT BOARD TO SUIT IPAC-94
SP-IPAC-CONPUMP	CONDENSATION PUMP TO SUIT ALL IPACS
SP-IPAC-AAA	AMBIENT AIR ADAPTOR TO SUIT IPAC-47 & IPAC-61 (CONDENSER PLENUM)
SP-IPAC-94-AAA	AMBIENT AIR ADAPTOR TO SUIT IPAC-94 (CONDENSER PLENUM)
SP-IPAC-WT	WATER TO SUIT IPAC
SP-IPFC-JS00	FILTER TO SUIT IPFC-075 NANOFIBER
SP-IPFC-KS01	FILTER TO SUIT IPFC-15 & IPFC-30 MEMBRANE PTFE
SP-ASPI80-HF	HEPA FILTER TO SUIT ASP-180
SP-ASPI80-PF	PRE FILTER TO SUIT THE ASP-180
SP-NF-M	MOTOR TO SUIT NFPD/NFWL750
SP-MF650-M	MOTOR TO SUIT MFP/MFW650
SP-MF750-M	MOTOR TO SUIT MFP/MFW750
SP-PAC-WP1	WATER PUMP TO SUIT PAC125-ADC
SP-PAC280-WP	WATER PUMP TO SUIT PAC280-A (303C)
SP-PACI-WP	WATER PUMP TO SUIT PACIMD/ISD (0B-505)
SP-IDDAC-WP	WATER PUMP TO SUIT IDDAC-670
SP-PAC-WF	WATER FLOAT TO SUIT ALL PACS
SP-IDDAC-WF	WATER FLOAT TO SUIT IDDAC-670
SP-PAC-CP1	COOLING PAD LGE TO SUIT PAC125-ADC
SP-PAC-CP2	COOLING PAD LGE TO SUIT PAC280-A
SP-PAC-CP3	COOLING PAD LGE TO SUIT PACIMD/ISD/IDDAC
SP-PAC-CP51	COOLING PAD SIDE TO SUIT PAC125-ADC
SP-PAC-CP52	COOLING PAD SIDE TO SUIT PAC280-A
SP-PAC-DIF1	DROP IN FILTER TO SUIT PAC125-ADC
SP-PAC-DIF2	DROP IN FILTER TO SUIT PAC280-A/IMD/ISD/IDDAC
SP-PAC280-SDF	SIDE DROP IN FILTERS TO SUIT PAC280-A
SP-PAC-FB1	FAN BLADE TO SUIT PAC125-ADC
SP-PAC-FB2	FAN BLADE TO SUIT PAC280-A
SP-PAC-FB3	FAN BLADE TO SUIT PACIMD/ISD/IDDAC-670
SP-PAC-C1	CONTROL PANEL TO SUIT PAC125-ADC
SP-PAC-C2	CONTROL PANEL TO SUIT PAC280-A



# We're here to help

We're always happy to help our customers, and we're committed to providing you with the best possible experience. If you're interested in learning more about our products or services, or if you're ready to make a purchase, please contact our sales team at [sales@fanmaster.com.au](mailto:sales@fanmaster.com.au) or 1300 900 345. We're proud to offer a wide range of products and services that meet the needs of our customers. Visit our website, [www.fanmaster.com.au](http://www.fanmaster.com.au) to learn more.

# Stay up to date

**Follow us on social media for the latest news and updates about our products and services.**

-  [www.youtube.com.au/fanmasteraus](http://www.youtube.com.au/fanmasteraus)
-  [www.facebook.com/fanmasteraus/](http://www.facebook.com/fanmasteraus/)
-  [au.linkedin.com/company/fanmaster](http://au.linkedin.com/company/fanmaster)
-  [@fanmasteraus](https://www.instagram.com/fanmasteraus)
-  [@fanmasteraus](https://www.tiktok.com/@fanmasteraus)
-  [@fanmasteraus](https://twitter.com/fanmasteraus)





# Terms & Conditions of Sale

---

## 1 Interpretation

In these conditions, unless the contrary intention appears:

Contract means any contract or agreement whatsoever made by Fanmaster to supply any goods or services to the customer, whether resulting from the acceptance by Fanmaster of an order given by the customer or otherwise;

Contract price means the total of the prices specified for the Supply by Fanmaster to the customer;

Fanmaster 1/6-8 Yalgar Road Kirrawee NSW 2232;

Customer means the customer of Fanmaster who buys goods or to whom Fanmaster supplies any services;

Goods means any or all of the products the subject of Supply by Fanmaster to a customer;

GST in relation to a Supply, has the same meaning as in the A New Tax System (Goods and Services Tax) Act 1999 (Cth);

Order means any offer to purchase the goods from Fanmaster made by a customer;

Price means, in relation to any goods, the price of those goods; services means any or all of the services (if any) the subject of Supply by Fanmaster to a customer;

Supply means the supply of any goods, services or other things the subject of any contract; and Tax means sales tax, GST, value added tax, retail tax or any other tax or duty that may be imposed on or in relation to any Supply made by Fanmaster.

## 2 Conditions

These conditions:

(a) will form part of any contract and constitute a complete and exclusive statement of the agreements between Fanmaster and the customer with respect to their subject matter (despite any conditions to a contrary effect which may be expressed in any of the customer's order forms or other documents);

(b) will apply to any Supply by Fanmaster, whether in accordance with any order, contract, or otherwise; and

(c) may be varied only by writing signed by an authorised officer of Fanmaster.

## 3 Terms of Payment

Time for payment of the price for any Supply is of the essence in any contract. If Fanmaster:

(a) accepts an order, and Fanmaster has not agreed in writing to extend credit to the customer, the customer must pay the contract price to Fanmaster in

full on delivery of the goods or services; or

(b) has agreed in writing to extend credit to the customer, the customer must pay the contract price to Fanmaster in full prior to the end of the month following

the date of the invoice sent by Fanmaster in relation to that Supply.

## 4 Delivery and Costs

Fanmaster may, but is not obliged to, deliver the goods to the customer's premises, in accordance with Fanmaster usual practices, but if:

(a) the customer requests another method of delivery; or

(b) Fanmaster elects to use an independent courier to deliver the goods,

Fanmaster may arrange another form of transport with that independent courier by a separate contract, and the customer must pay to Fanmaster on demand any costs of that courier incurred by Fanmaster.

## 5 Title and Property

The title to and property in the goods will not pass from Fanmaster to the customer until the customer has paid the contract price in full (other than the costs of any independent courier referred to in clause 4) to Fanmaster in accordance with these conditions. Until then, the customer holds the goods in a fiduciary relationship with Fanmaster as bailee only, must keep the goods separate from other items it holds and must not resell or transfer possession of the goods. If the customer:

(a) fails to pay the contract price in full when due;

(b) pays for the goods by cheque (in whole or in part) and that cheque is not met on presentation;

(c) commits any act of bankruptcy, becomes bankrupt, or is insolvent under administration, as defined in section 9 of the Corporations Act;

(d) is or becomes insolvent within the meaning as given by any of section 9 and subsection 95A (2) of the Corporations Act or regulation 7.5.02 of the

Corporations Regulations; or

(e) has a controller appointed, as defined in section 9 of the Corporations Act, in respect of any of the customer's property;

Fanmaster may:

(1) enter onto the premises where the goods are situated; and

(2) repossess the goods, notwithstanding that the goods may have been affixed to any structure by Fanmaster or the customer, and if necessary for that purpose, may sever the goods from any structure to which they may have been affixed.

If Fanmaster repossesses the goods, it reserves the right to resell them.

The customer must also indemnify and keep Fanmaster indemnified against, and pay to Fanmaster, all expenses, losses and damages incurred or sustained by Fanmaster as a result of, or in relation to, Fanmaster exercising its rights under:

(a) this clause;

(b) under any other term, express or implied, of these conditions; or

(c) otherwise at law or in equity,

and any bank or other costs, charges or expenses incurred by Fanmaster resulting from any customer's cheque not being met on presentation.

## 6 Returns policy

Subject to the requirements of any law, Fanmaster:

(a) may consider, but is not obliged to allow, goods to be returned for credit, if:

(1) the goods are returned in good and resalable condition, in the original packaging;

(2) the customer first pays all freight and other charges to deliver the goods to Fanmaster premises and Fanmaster will not accept any goods sent, or pay for, "freight forward"; and

(3) the customer first supplies to Fanmaster the original invoice number and date of supply.

(b) may in its sole discretion, allow the following credits for goods returned:

(1) for goods returned within 30 days of invoice – invoice value less 15%;

(2) for manufactured goods returned within 30 days of invoice – invoice value less 30% at Fanmaster's discretion; and

(3) for goods returned after 60 days – no credit (unless Fanmaster agrees otherwise, in its sole discretion).

(c) will not allow credits for:

(1) any goods:

• specifically adjusted, altered or reconfigured;

• specially made, treated or purchased for the customer;

• damaged or altered in any way by the customer; or

• being non-stock lines; or

(2) any freight and delivery fees.

If Fanmaster accepts any goods returned for credit:

- (a) Fanmaster may issue a credit note after it has inspected the goods and found them satisfactory, in its sole discretion; and
- (b) if Fanmaster decides not to issue a credit note, Fanmaster will:
  - (1) so inform the customer; and
  - (2) make the goods made available at Fanmaster premises for the customer to collect.

## 7 Shortages

The customer must report all shortages of goods from the quantities described in the invoice within 24 hours of delivery of the goods otherwise the customer may not make any claim against Fanmaster for any such shortages.

## 8 Consequential Loss

The customer's sole remedy for any defective goods or services will be the repair or replacement of the defective goods or for the re-supply of the defective services.

Fanmaster liability for any breach of any warranty or of any term, express or implied, of any contract in relation to any Supply, will not extend in any circumstances to loss of profits, or other economic loss, or to loss arising from negligence or any other tort, in any case, whether direct, indirect, special, consequential or otherwise.

## 9 Risk and Insurance

Notwithstanding clauses 4 and 5, the goods will be at the customer's risk after they leave Fanmaster premises. If the customer requests it in writing, Fanmaster may, at the customer's expense, insure the goods.

## 10 Taxes

Unless otherwise expressly agreed by, or shown on an invoice issued by, Fanmaster, the prices specified do not include Taxes. The customer will be liable for all such Taxes and in the case of GST or any other amount payable by the customer on account of Taxes, the customer will reimburse Fanmaster, on demand, the full amount of such Taxes.

## 11 Limitation of Liability

Except as otherwise expressly provided in these conditions, and subject to the succeeding paragraphs, Fanmaster excludes all statements, representations, warranties, conditions, promises, undertakings, covenants and other provisions, express or implied (and whether implied by law (including Act of Parliament) or otherwise), relating to the order, the goods or services (whether as to their quality, fitness for any purpose, correspondence with any description or sample or otherwise), or their delivery being provisions that might otherwise form part of these conditions, or any contract, or be collateral to or form part of any agreement that is collateral to these conditions, or any contract.

Subject to the next paragraph, Fanmaster will not be liable to compensate or indemnify the customer for any loss or damage suffered or incurred by the customer in relation to the order, the goods, or the services, or their delivery, mis-delivery or non-delivery (including but not limited to any loss of profits or other economic loss or to loss arising from negligence or any other tort, in any case, whether direct, indirect, consequential or otherwise).

These conditions do not, and no provision of these conditions purports to exclude, restrict or modify or have the effect of excluding, restricting or modifying:

- (a) the application in relation to the supply of the goods or services of any provision of the Trade Practices Act 1974 or of any similar State or Federal legislation that may not be excluded, restricted or modified;
  - (b) the exercise of a right conferred by such provision; or
  - (c) subject to the next paragraph, any liability of Fanmaster for breach of a condition or warranty implied by such a provision.
- Fanmaster liability for a breach of a condition or warranty implied by a provision of Division 2 of Part V. of the Trade Practices Act 1974, or of any similar State or Federal legislation where Fanmaster may similarly limit its liability, will be limited to any one of the following:

(a) in the case of goods:

- (1) the replacement of the relevant goods or the supply of equivalent goods;
- (2) the repair of the relevant goods;
- (3) the payment of the costs of replacing the relevant goods, or of acquiring equivalent goods; or
- (4) the payment of the costs of having the relevant goods repaired; and

(b) In the case of services:

- (1) the supply of the services again; or
- (2) the payment of the cost of having the relevant services supplied again, and Fanmaster may in its sole discretion determine which of the foregoing limits will apply in any case.

## 12 Governing Law

Any Supply by Fanmaster to the customer, and these conditions, will be governed by the laws of or applicable in the Australian state or territory where the goods are delivered or the services are supplied to the customer (or if outside Australia, then by the laws applicable in the Australian state or territory from which the goods or services are supplied).



1300 900 345



[sales@fanmaster.com.au](mailto:sales@fanmaster.com.au)



[www.fanmaster.com.au](http://www.fanmaster.com.au)

