

## INSTRUCTION MANUAL

### Introduction

To get the most out of your new fan heater, please read through these instructions and the attached safety regulations before use. Please also save the Instructions in case you need to remind yourself of the fan heater's functions at a later date.

### Technical specifications

Voltage/frequency:	400V ~ 50Hz
Power rating:	9000 W
Settings:	4(55W fast,4500W slow,9000W slow,9000W fast)
Temperature:	Continuously adjustable 0-40 °C
Dim.:	350x440x480mm
Weight:	11.8kg
Requires at least a 10 A fuse	
Housing of steel plate and heat-resistant lacquer	
Supplied complete with cord and plug	

### The fan heater dials



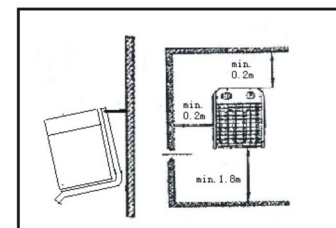
1. Function selector with four power settings
2. Thermostat dial

### Special safety regulations

- The fan heater is not suitable for use outdoors in damp weather, in bathrooms or in other wet or damp environments.

- Please note that the fan heater can become very hot and should, therefore, be placed at a safe distance from flammable objects such as furniture, curtains and similar.
- Do not cover the fan heater.
- Do not place the fan heater immediately under a wall socket.
- Do not connect the fan heater using an on/off timer or other equipment which can automatically switch the device on.
- The fan heater must not be placed in rooms where flammable liquids or gases are used or stored.
- If an extension cord is used, it must be as short as possible and always be fully extended.
- You must not connect other appliances to the same mains socket as the fan heater.

If the fan heater is to be permanently installed, the following instructions must be observed:



### Use

- Position the fan heater so that it stands upright on a firm surface and at a safe distance from wet environments and flammable objects.
- Connect the fan heater to the mains.
- Set the thermostat dial to the maximum temperature.
- The fan heater will switch on when the function selector is set to one of the three power settings.
- Once the room reaches the required temperature, you should turn the thermostat dial slowly counter-clockwise until the fan heater switches off. The fan heater now starts and stops automatically and thus keeps the room temperature constant.