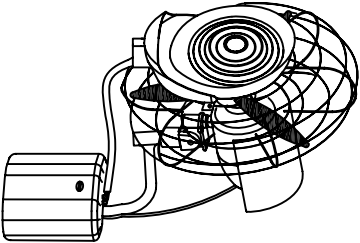


# FANMASTER

## MISTING WALL FAN

### INSTALLATION AND OPERATION INSTRUCTIONS



Before operating this unit, please read instructions completely

### MAINTENANCE

1. In order to keep the machine beautiful and wearing well,you should clean the machine timely.
2. Please cut off the power before cleaning and disparting front guard and blade.Clean the machine with soft besom and cloth,if possible and you can use some cleanser (please don't use gas or other corrosive liquid)after cleaning please dry the guard and blade with dry cloth,then install the machine reversedly. (Attention:mist system inside misting plate can't be disparted).
3. Please don't let water flow into the motor and wet electric elements during cleaning,also don't crash the blade and change the angle of the blade.
4. In order to keep water clean in water tank,please wash the water tank,water-receiving plate at a proper time.
5. To ensure machine can oscillate smoothly,please add grease oil to the rotary part of oscillating mechanism per a half year.
6. Please clean the machine and seal the whole machine with plastic bag when the machine not being used for a long time.

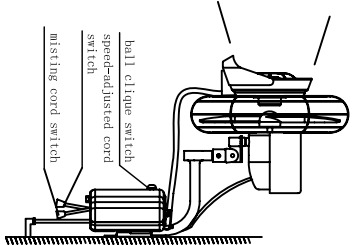
### GUARANTEE

- 1.Under the normal using conditions,the user can change a new one free and get free repair from seller in one year (from the date of purchase)if quality problem happened.
2. We can promise to repair the machine forever. (but the repair should be charged after one year).
3. We can't give warranty if following problems happened:  
a. The fault is caused by incorrect dispart,amendment and repair without proceeded by our company.  
b. The fault is caused by natural disaster or incorrect operation.  
c. The machine is not sealed by seller and without purchasing date.

### CAUTION

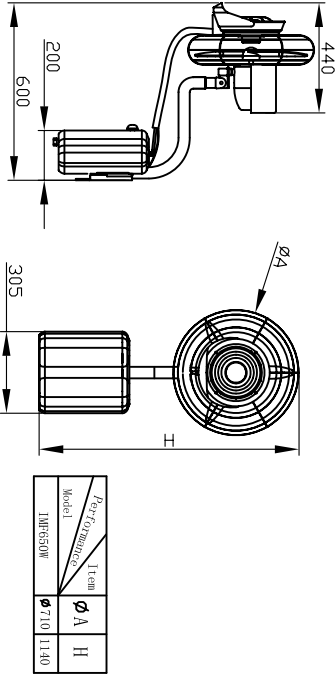
1. When opening packing box,please take machine head out as per direction sign.
2. Don't insert hands or any objects into the machine guards and misting plate.
3. Upward and downward angle of machine must be adjusted within stated angle range.
4. Don't install the machine close to curtain and other easy inhalation.
5. Children, elders and weak people can't stand in front of the machine for a long time.
6. If the power cord is broken,please ask professional person to change it with special tools.
7. Please trush cut off the power and send the machine to our factory or appointed repair store to repair by qualified maintenance man if the running machine emit unusual noise,smoke or machine blade can not run after power supply.
8. Except maintenance scope unprofessional person can't dispart,repair and amend the machine.
9. Take away moistureproof things when starting mist function in order to avoid moisture.

Picture 4



- a. Make water tank full of water and check each connector.
- b. Turn ball cliche switch from "ON" to "OFF" first,Get through power supply and turn on speed-adjusted cord switch on the left to check if fan motor and blades operate in good condition.
- c. Turn on misting cord switch on the right to check if misting motor,water pump and misting plate operate in good condition.
- d. Turn the ball cliche switch from "OFF" to "ON" and check misting effect.Mist is bigger and drops come out when operating at the first thirty minutes,but after that,drops disappear gradually and mist becomes normal. See picture 4 below.

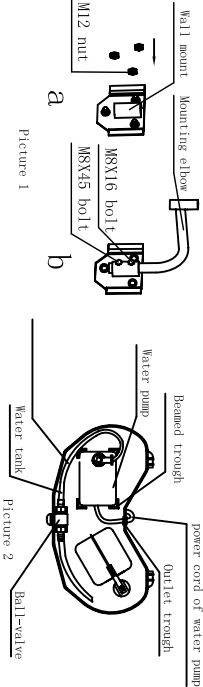
### OUTER DIMENSION



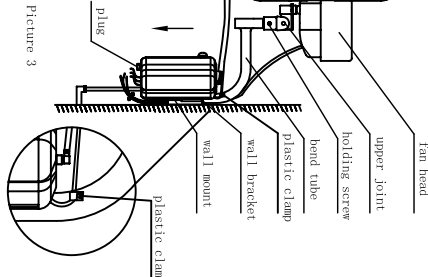
### INSTALLATION SKETCH MAP

Please refer to this sketch map during installation,check carefully all parts before installing to avoid lack or damage during transportation.Gently take and move all parts to avoid damage.

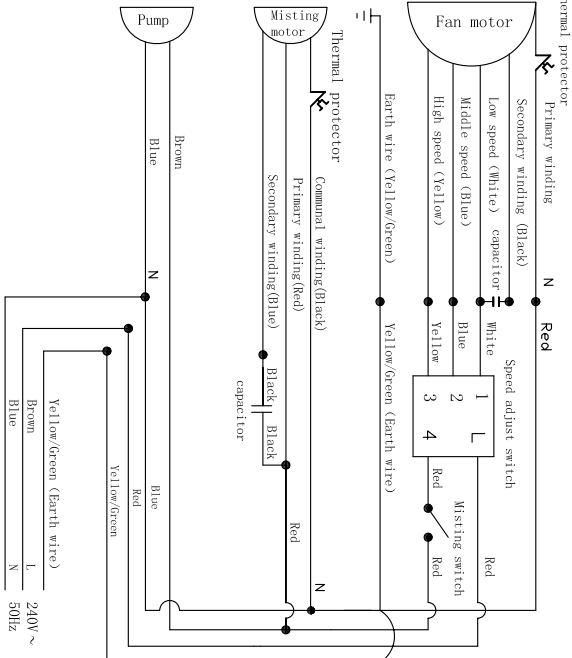
1. Install wall mount.  
a. Use three pieces of M12(the length of balcy bolt should not be shorter than 80mm,when take out the bolt's head,its height should not be taller than 25mm) to fix the wall mount.  
b. Install mounting elbow in the wall mount, make M8X45bolts aim at  $\varnothing 8$  holes of mounting elbow and fasten the bolts. See picture 1 as below.
2. Take out and install the water pump.  
a. Take the water pump carefully before breaking the seal of the water pump.  
b. Place water pump upright on beamed trough in water tank correctly,fix the water pump on the bottom of water tank by using the four pieces of osculum on the bottom of water pump. (Pay attention to the direction of water pump).
- c. Place power cord of water pump in the outlet trough,then cover the water tank cover wall. See picture 2 as below.



3. Install fan head and water tank  
a. Get upper joint into bend tube and tighten holding screw to fix the fan and the bend tube.  
b. Fix wall bracket into rolling side of wall mount.  
c. Tie power lines of fan motor and misting motor together byusing plastic clamp and fix them onto bend tube. Attend to leave enough length for fan oscillating. Each covering wire is hid in the back of water tank.  
d. Install tube  $\varnothing 6$  and  $\varnothing 10$  on fan motor's corresponding connector.  
e. Get power line's connector of the fan motor and three connectors under water tank on right connection, then arrange well power line and fill them into bottom of water tank. Cover the board of connector's board and screw.  
f. Get connecting tube of the water tank's bottom into water supply.



### WIRING DIAGRAM



### Parameter

Performance Model	Stage 1				Stage 2				Stage 3				Mist volume L/h
	Speed Air line # 2.5mm	Noise Power W	Speed Air line # 2.5mm	Noise Power W	Speed Air line # 2.5mm	Noise Power W	Speed Air line # 2.5mm	Noise Power W	Speed Air line # 2.5mm	Noise Power W	Speed Air line # 2.5mm	Noise Power W	
1140W	1100	192	55	325	1250	224	60	335	1400	292	68	360	7.5

Note:No further notice if above indices change.

### FEATURE AND APPLICATION

1. Utilizes CAD optimized design, good and graceful-looking.
2. The machine misting system adopts centrifugal misting excellent design, reasonable structure and easy maintenance.
3. The machine surface adopts outdoors' epoxy coating, which makes the machine be good rust prevention and long service life. The machine has waterproof electric facility, which makes the machine operate safe.
4. The misting and blowing is separately moved by different motor. Motor adopts high quality bearing, so the motor is with stable performance, low temperature-rising, low noise and strong overload.
5. The machine's misting effect is very excellent, and it can be adjusted the misting magnitude at random, the electriferous parts of water pump collocate complete insulating close protection-equipment, which makes the machine is convenient and reliable.
6. The machine has the performance of automatic water, which makes the machine can mist potentially and need not people to inject water.
7. The machine has oscillation installation, and the blow angle can be adjusted, so it is easily, safely and reliably operated. It is suitable for cooling, dust and peculiar smell prevention in factory, household, marketplace and field; it also can be used in animal breeding field, flower greenhouse and mushroom breeding field and other special fields.

### OPERATION INSTRUCTION

1. The machine must use the voltage, frequency specified on the nameplate. It isn't suitable to use in the too corrosive surrounding.
2. Do not install this machine in places where the altitude is higher than 1,000 meters or temperature is over 40℃.
3. When socket is used in power supply, the socket should meet the IEC335-1 standard, when power liner is from direct power supply, a polarity switch should be installed with contact gap not less than 3mm on the fixation wiring.
4. The machine has two cord switches. The forward one is speed-adjusted switch that controls high & medium & low for fan motor and the backward one is misting switch which controls misting motor and water pump. Misting switch can be used only when speed-adjusted switch is got through. Details as following: First pulling is low level for fan motor; Second pulling is medium level; Third pulling is high level; Fourth pulling is power off. They circulate like this. For misting switch, first pulling is to get through misting motor and water pump; Second pulling is to cut off power supply of misting motor and water pump. They circulate like this.
5. If the machine is selected to operate by misting mode, its misting magnitude can be adjusted optionally between "OFF" and "ON".
6. Before getting connecting tube into water supply, in order to prevent ball-valve and copper tube from dirt jammed, clean dirt in the connecting tube and connect.
7. Clean water tank before using every day. Open the cover on the bottom of water tank to emit water (See Picture 3 for the cover).
8. Please do clean water tank before using.