

Electric Strip Black Heat Heater

FAB SHEET

FEATURES

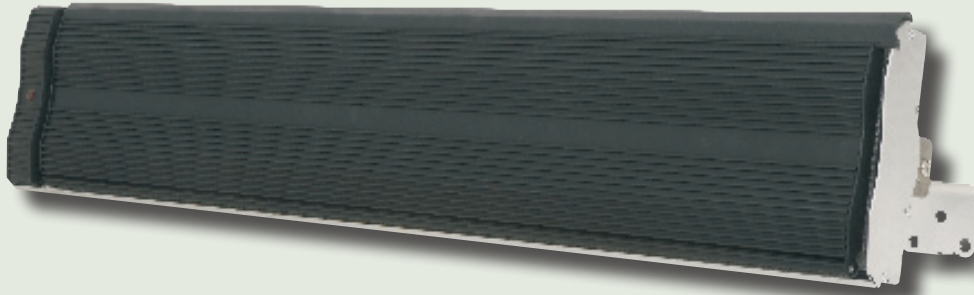
- ✓ High quality aluminium body design
- ✓ Black heat (radiant) steel tube elements
- ✓ No internal moving parts
- ✓ IP24 protection
- ✓ Minimal maintenance
- ✓ Safety cut-off switch

ADVANTAGES

- ✓ Lightweight and small footprint
- ✓ Does not emit light or glow when in use
- ✓ Low noise
- ✓ Can be used outdoors & indoors
- ✓ Low ongoing cost
- ✓ Increased safety measures

BENEFITS

- ✓ Easy to install
- ✓ Creates a gentle, even & comfortable heat
- ✓ Quiet operation
- ✓ Outdoor heating solution
- ✓ Saves time & money
- ✓ Peace of mind



Applications:

- ⊕ Warehouses, factories & workshops
- ⊕ Hospitality - pubs, clubs, restaurants, cafes & hotels
- ⊕ Offices & showrooms
- ⊕ Alfresco & patio areas
- ⊕ Undercover outdoor areas

Electric Strip Black Heat Heater

TECHNICAL DATA SHEET

SPECIFICATION

Model No	ESBH1800	ESBH2400	ESBH3200
Power	1800W	2400W	3200W
Voltage	240V / 50Hz	240V / 50Hz	240V / 50Hz
Plug Connection	10amp *can be hardwired	15amp *can be hardwired	15amp *can be hardwired
Current (A)	7.5	10.00	13.33
Safety Switch/Cut off	Yes	Yes	Yes
Heater Type	Electric Radiant - steel tube elements	Electric Radiant - steel tube elements	Electric Radiant - steel tube elements
Material	Aluminium Body	Aluminium Body	Aluminium Body
IP Rating	IP24	IP24	IP24
Measurements (mm)	1000(L)x55(D)x185(H)	1500(L)x55(D)x185(H)	2000(L)x55(D)x185(H)
Weight (kg)	6	8.8	11.5
Min Installation Height	2.1m	2.1m	2.1m

QUICK SELECTION GUIDE

HEIGHT	SQM	SQM	SQM
OUTDOOR UNDERCOVER PART OPEN AREAS			
2.4	3.3	4.4	6.1
3.0	3.0	4.0	5.5
OUTDOOR UNDERCOVER ENCLOSED AREAS			
2.4	5.0	6.6	8.8
3.0	4.5	6.0	8.0
3.5	4.1	5.4	7.2
INDOOR SPOT HEATING			
2.4	6.6	8.8	11.8
3.0	6.0	8.0	10.7
3.5	5.4	7.2	9.6
4.0	5.1	6.8	9.1
5.0	3.9	5.2	7.0
INDOOR OPEN AREAS			
2.4	9.9	13.2	17.6
3.0	9.0	12.0	16.0
3.5	8.1	10.8	14.4
4.0	7.7	10.2	13.6
5.0	5.9	7.8	10.4
INDOOR INSULATED AREAS			
2.4	19.8	26.4	35.2
3.0	18.0	24.0	32.0
3.5	16.2	21.6	28.8
4.0	15.3	20.4	27.2
5.0	11.7	15.6	20.8

* The ESBH series require to be fitted with an "ON/OFF" isolation switch and must be earthed. A R.C.D (residual current device) is recommended to be fitted in the circuit.